

Flexifinger[®] FXA[®]

**DEALER
NETWORK**

INFORMATION

Flexifinger[®] Corporate Head Office

Box 1599, 501 – 1st Avenue East

Assiniboia SK Canada S0H 0B0

T: 306-642-4555

F: 306-642-3520

E: communications@flexifinger.com

W: www.flexifinger.com

This manual is provided by Flexxifinger QD Industries Inc. or any affiliates thereof ("Flexxifinger"), as a reference and guide to a company or individual who has agreed to sell Flexxifinger's products.

This manual is strictly private, confidential and personal to its recipients and should not be copied, distributed or reproduced in whole or in part, nor passed to any third party.

This manual is provided for information purposes only.

Flexxifinger QD Industries Inc., or any affiliates, designates, directors, members, officers, employees thereof, make no representation or warranty, express or implied, as to the fairness, accuracy, completeness or correctness of this manual.

The information contained in this manual is subject to change without notice. Flexxifinger assumes no responsibility for any errors or omissions that may appear in this manual.

This manual and parts thereof must not be reproduced or copied without Flexxifinger's written permission, and contents thereof must not be imparted to a third party nor used for any unauthorized purpose.

2019 © Flexxifinger QD Industries Inc. – All rights reserved
Printed in Canada

Flexxifinger QD Industries Inc.
501 – 1st Avenue East
Assiniboia SK CANADA S0H 0B0
306-642-4555

Version 08.19

CONTACT US:



OFFICE & SHOWROOM:

501 – 1st Avenue East
Assiniboia SK Canada S0H 0B0



MAILING ADDRESS:

Box 1599
Assiniboia SK Canada S0H 0B0



TELEPHONE INQUIRIES:

Worldwide: +1-306-642-4555
Toll free Canada: 1-800-925-1510
Toll free US: 1-800-544-8512
Europe: +49 (0)40-87408881



EMAIL:

communications@flexifinger.com



WEBSITE:

www.flexifinger.com



TWITTER:

@flexifinger



YOUTUBE:

Flexifinger



FACEBOOK:

Flexifinger QD Industries Inc.



ORDER DESK:

T: 306-642-4555
F: 306-642-3520
E: communications@flexifinger.com



SALES, SERVICE & SUPPORT:

T: 306-642-4555
F: 306-642-3520
E: sales@flexifinger.com



WARRANTY CLAIMS:

T: 306-642-4555 (ext. 101)
F: 306-642-3520
E: warranty@flexifinger.com



SHIPPING & RECEIVING:

T: 306-642-4555 (ext. 204)
F: 306-642-3520
E: communications@flexifinger.com



ACCOUNTING:

T: 306-642-4555 (ext. 210)
F: 306-642-3520
E: accounts@flexifinger.com



CONTRACTS & ADMINISTRATION:

T: 306-642-4555 (ext. 101)
F: 306-642-3520
E: communications@flexifinger.com

PULSE CROP LIFTER™

70060



70062



INCLUDED IN THE BOX: LIFTER RAIL AND RECEPTOR; 32254-55 QD™ NUT .

FEATURES:

The Flexifinger® Pulse Crop Lifter™ was originally designed for straight combining in desiccated crops like peas, lentils and edible beans where cutting close to the ground is required. The lifter rail hugs the guard and the replaceable nylon finger is held in an adjustable receptor, allowing the combine operator to fine-tune the location of the lifter's forward lifting point for his specific conditions. The finger extends beyond the finger receptor and becomes a tail that guides the plant material over the knife.

USAGE:

Peas, lentils, chickpeas, black beans, pinto beans, soy beans, white beans

Generally, the recommended spacing is one lifter per foot across the header. Harvesting some row or bedded crops, where lifters mounted to the row or a combination of different Flexifinger® lifters to maximize recovery have proven beneficial.



COMPATIBLE NYLON FINGERS

33048



PULSE NYLON FINGER
(.635" x 2.75" / 16mm x 70mm)

33050



PULSE NYLON FINGER
(.635" x 4.75" / 16mm x 120mm)



ADDITIONAL ACCESSORIES

32310



CARRIAGE BOLTS

Used on a header that has carriage guard bolt from under the header, in order to mount the QD™ nut assembly.

32312



32314



33080



BEAN LIFTING PAN

Attaches to the rail of the Flexifinger's® line of crop lifters and helps to pull edible bean pods above the knife and reduce shatter loss in dry field conditions by catching shelled seed that would otherwise be lost.

40090



OFF-SET BRACKET

Used to mount lifters at specific intervals on guards that do not align with a guard bolt, such as on systems with 4" (100mm) spacing between guards. Only required for special row-seeded configurations.

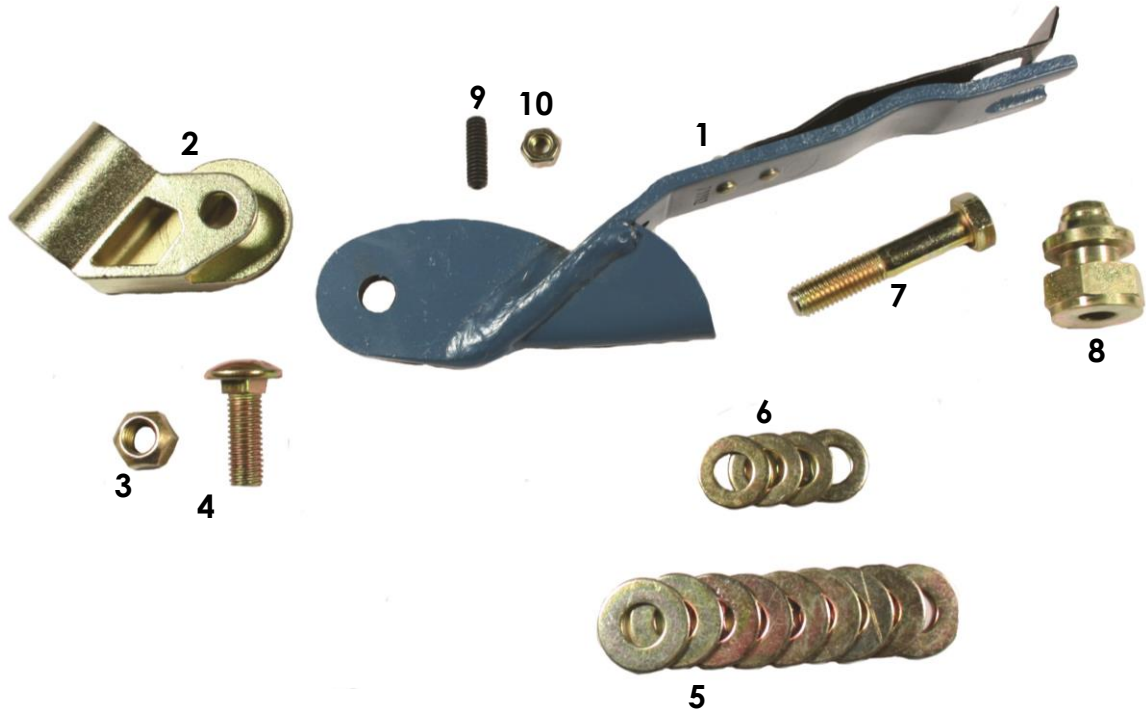
PARTS LISTING 70060 – Pulse Crop Lifter N



PART #	DESCRIPTION	QTY	PART #	DESCRIPTION	QTY
1	40360 Pulse crop lifter rail N (black)	1			
2	40116 .635" receptor	1			
3	32300 8mm carriage bolt	1			
4	32301 8mm lock nut	1			
5	815008 USS washers	8			
6	815058 SAE washers	4			
7	801240 55mm bolt	1			
8	32254 QD™ nut	1			

PARTS LISTING

70062 – Pulse Crop Lifter J



PART #	DESCRIPTION	QTY	PART #	DESCRIPTION	QTY
1	40362 Pulse crop lifter rail J (blue)	1			
2	40116 .635" receptor	1			
3	32300 8mm carriage bolt	1			
4	32301 8mm lock nut	1			
5	815008 USS washers	8			
6	815058 SAE washers	4			
7	801240 55mm bolt	1			
8	32254 QD™ nut	1			
9	32294 Set screw for lifter	1			
10	32295 Jam nut for set screw	1			

HEAVY DUTY CROP LIFTER™



70050



70052

INCLUDED IN THE BOX: LIFTER RAIL AND RECEPTOR; 32254-55 QD™ NUT ASSEMBLY; NYLON FINGER SOLD SEPERATELY

FEATURES:

The Flexifinger® Heavy Duty Crop Lifter™ is for harvesting a variety of different crops including pulses, cereals, rice, oils, forage and other specialty crops. The lifter rail hugs the guard and the replaceable nylon finger is held in an adjustable receptor, allowing the combine operator to fine-tune the location of the lifter's forward lifting point for his specific conditions. The finger extends beyond the finger receptor and becomes a tail that guides the plant material over the knife. The nylon finger choices make it possible to customize for diverse crop and ground conditions.

USAGE:

Pulses, cereals, rices, oilseed, forage and other specialty crops

Generally, the recommended spacing is one lifter per foot across the header. Harvesting some row or bedded crops, where lifters mounted to the row or a combination of different Flexifinger® lifters to maximize recovery have proven beneficial.

COMPATIBLE NYLON FINGERS



33058

HD NYLON FINGER
(1" x 5.5" / 26mm x 140mm)



33058P

HD NYLON FINGER, WITH PAD
(1" x 5.5" / 26mm x 140mm)



33060P

HD NYLON FINGER, WITH PAD
(1" x 7.75" / 26mm x 197mm)



33060P.1

HD NYLON FINGER, NO TAIL
(1" x 7.75" / 26mm x 197mm)



33064P

HD NYLON FINGER, FIBERGLASS CORE
(1" x 7.75" / 26mm x 197mm)

ADDITIONAL ACCESSORIES



32310

32312

32314

CARRIAGE BOLTS

Used on a header that has carriage guard bolt from under the header, in order to mount the QD™ nut assembly.



33080

BEAN LIFTING PAN

Attaches to the rail of the Flexifinger's® line of crop lifters and helps to pull edible bean pods above the knife and reduce shatter loss in dry field conditions by catching shelled seed that would otherwise be lost.

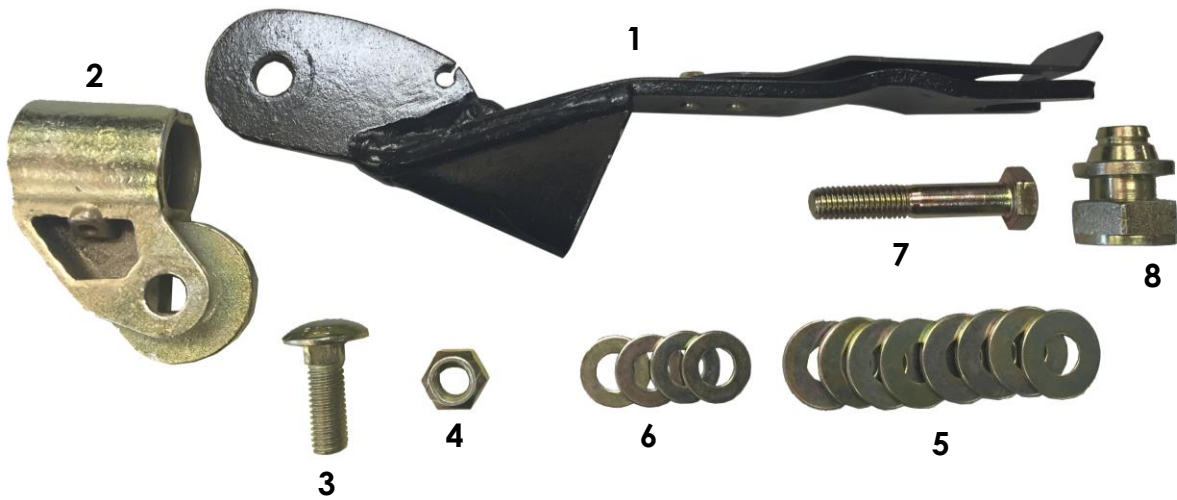


40090

OFF-SET BRACKET

Used to mount lifters at specific intervals on guards that do not align with a guard bolt, such as on systems with 4" (100mm) spacing between guards. Only required for special row-seeded configurations.

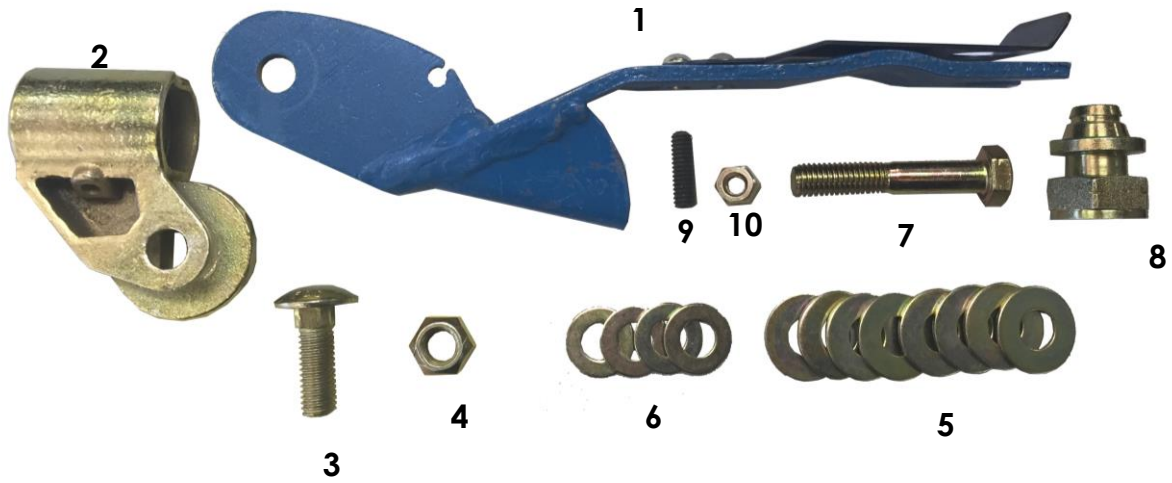
PARTS LISTING 70050 – Heavy Duty Crop Lifter N



PART #	DESCRIPTION	QTY	PART #	DESCRIPTION	QTY
1	40350.1 Heavy Duty rail N (black)	1			
2	40118 1.01" receptor	1			
3	32302 10mm carriage bolt	1			
4	32303 10mm lock nut	1			
5	815008 USS washers	8			
6	815058 SAE washers	4			
7	801240 55mm bolt	1			
8	32254 QD™ nut	1			

PARTS LISTING

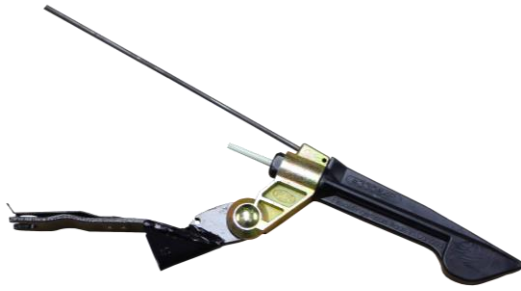
70052 – Heavy Duty Crop Lifter J



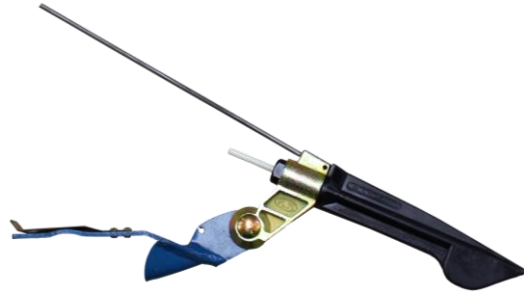
PART #	DESCRIPTION	QTY	PART #	DESCRIPTION	QTY
1	40352 Heavy Duty rail J (blue)	1			
2	40118 1.01" receptor	1			
3	32302 10mm carriage bolt	1			
4	32303 10mm lock nut	1			
5	815008 USS washers	8			
6	815058 SAE washers	4			
7	801240 55mm bolt	1			
8	32254 QD™ nut	1			
9	32294 Set screw for lifter	1			
10	32295 Jam nut for set screw	1			

DFO™ CROP LIFTER

70040



70042



INCLUDED IN THE BOX: LIFTER RAIL, RECEPTOR AND TAIL; 33064P NYLON FINGER; 32254-55 QD™ NUT ASSEMBLY

FEATURES:

The Flexifinger® DFO™ Crop Lifter™ is designed for use on auger headers and is used for harvesting a variety of different crops including peas, cereals, oilseed, and other specialty crops. The lifter rail hugs the guard and the replaceable nylon finger is held in an adjustable receptor, allowing the combine operator to fine-tune the location of the lifter's forward lifting point for his specific conditions. The receptor is outfitted with a spring-steel tail which stands the crop up in front of the auger, optimizing crop flow into the machine allowing increased ground speeds.

USAGE:

Peas, cereals, oilseed, and other specialty crops

Generally, the recommended spacing is one lifter per foot across the header. Harvesting some row or bedded crops, where lifters mounted to the row or a combination of different Flexifinger® lifters to maximize recovery have proven beneficial.



COMPATIBLE NYLON FINGERS

33058



NYLON FINGER
(1" x 5.5" / 26mm x 140mm)

33058P



NYLON FINGER, WITH PAD
(1" x 5.5" / 26mm x 140mm)

33060P



NYLON FINGER, WITH PAD
(1" x 7.75" / 26mm x 197mm)

33060P.1



NYLON FINGER, NO TAIL
(1" x 7.75" / 26mm x 197mm)

33064P



NYLON FINGER, FIBERGLASS CORE
(1" x 7.75" / 26mm x 197mm)



ADDITIONAL ACCESSORIES

32310



CARRIAGE BOLTS

Used on a header that has carriage guard bolt from under the header, in order to mount the QD™ nut assembly.

32312



32314



33080



BEAN LIFTING PAN

Attaches to the rail of the Flexifinger's® line of crop lifters and helps to pull edible bean pods above the knife and reduce shatter loss in dry field conditions by catching shelled seed that would otherwise be lost.

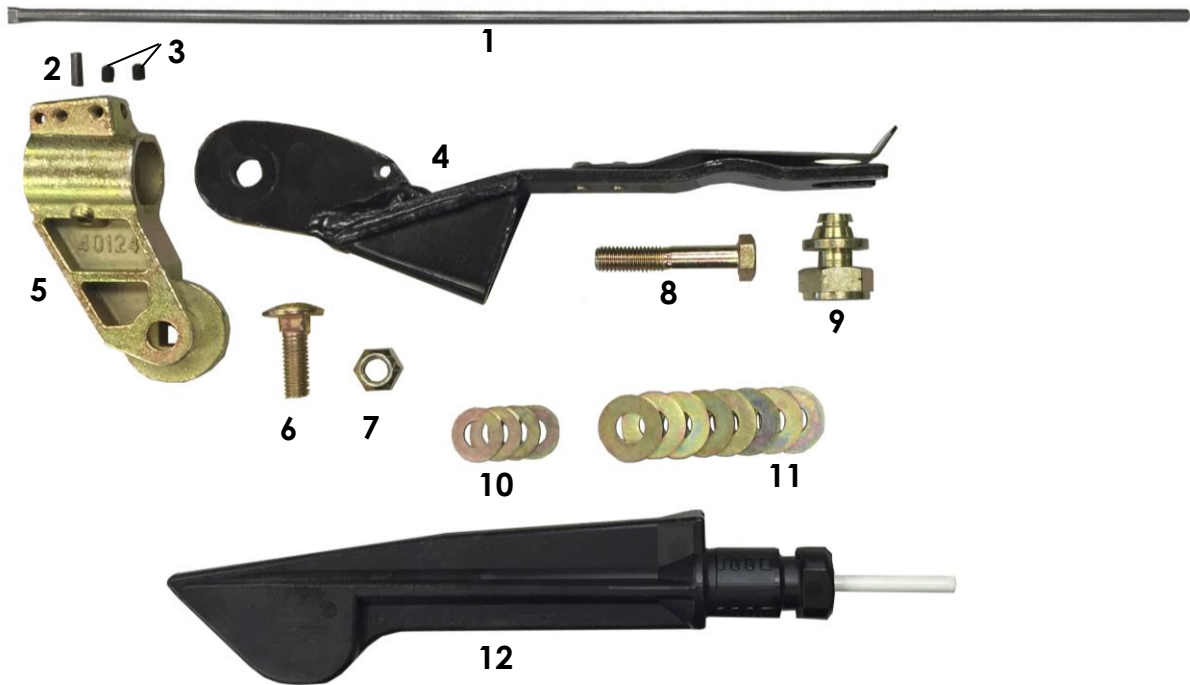
40090



OFF-SET BRACKET

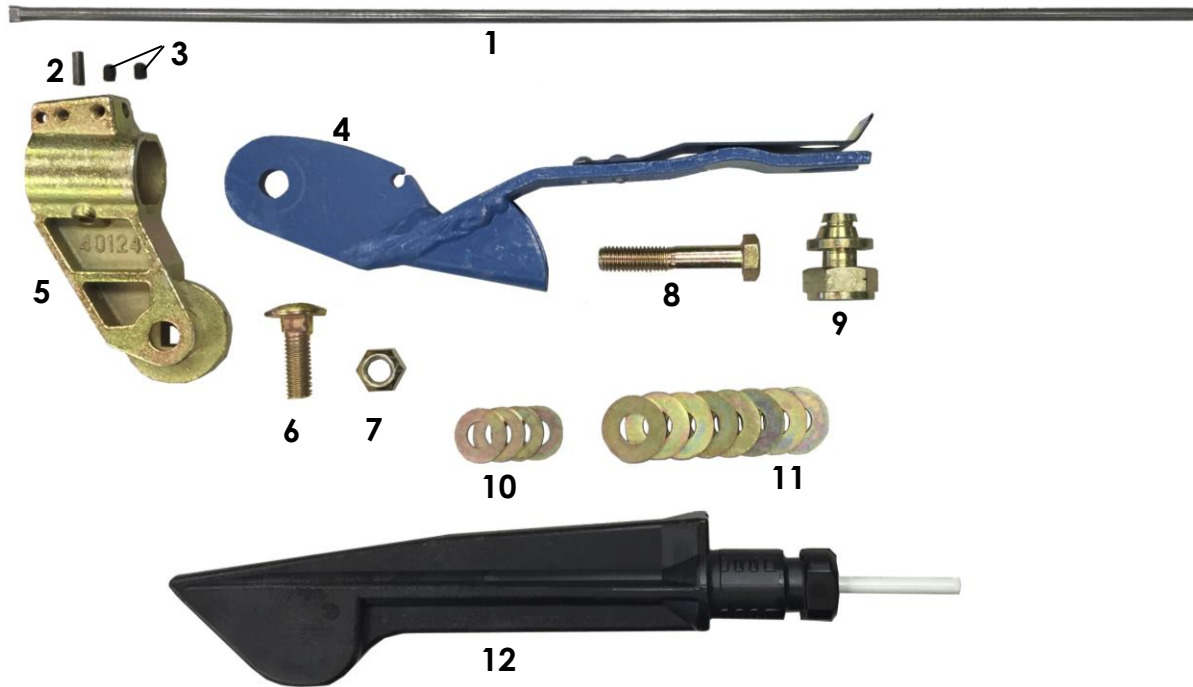
Used to mount lifters at specific intervals on guards that do not align with a guard bolt, such as on systems with 4" (100mm) spacing between guards. Only required for special row-seeded configurations.

PARTS LISTING 70040 – DFO™ Crop Lifter N



PART #	DESCRIPTION	QTY	PART #	DESCRIPTION	QTY
1	32321 Spring steel tail	1	11	815008 USS washers	8
2	20614 Slotted roll pin	1	12	33064P Nylon finger, 7.75", fibrgls	1
3	811601 Set screw for DFO	2			
4	40350 Heavy Duty rail N (black)	1			
5	40124 1.01" DFO™ receptor	1			
6	32302 10mm carriage bolt	1			
7	32303 10mm lock nut	1			
8	801240 55mm bolt	1			
9	32254 QD™ nut	1			
10	815058 SAE washers	4			

PARTS LISTING 70042 – DFO™ Crop Lifter J



PART #	DESCRIPTION	QTY	PART #	DESCRIPTION	QTY
1	32321 Spring steel tail	1	11	815008 USS washers	8
2	20614 Slotted roll pin	1	12	33064P Nylon finger, 7.75", fibrgls	1
3	811601 Set screw for DFO	2			
4	40352 Heavy Duty Rail J (black)	1			
5	40124 1.01" DFO™ receptor	1			
6	32302 10mm carriage bolt	1			
7	32303 10mm lock nut	1			
8	801240 55mm bolt	1			
9	32254 QD™ nut	1			
10	815058 SAE washers	4			

FLEXXIFLOAT™ 100 CROP LIFTER



74100

INCLUDED IN THE BOX: LIFTER RAIL AND RECEPTOR; 32254-55 QD™ NUT ASSEMBLY; NYLON FINGER SOLD SEPERATELY

FEATURES:

The FlexiFloat™ crop lifter series has been designed specifically for use where ground conditions are uneven. The FlexiFloat™ series has a pivot which allows the lifter to follow the fluctuations of the ground. This series attaches to the header using the same patented QD™ attaching technology as the rest of the Flexifinger family of lifter products. This lifter combines the advantages of the FlexiFloat™ lifter with a nylon finger. The spring pivot attached to the rail allows the lifter to flex in varying ground conditions, while the nylon finger provides a gentle lift to the crop. The lifter and finger can be paired with the optional 20250 shoe to add increased wear on the tip of the nylon finger in particularly uneven or rocky soil conditions.

USAGE:

Peas, cereals, oilseed, and other specialty crops

The FlexiFloat™ system is available with two rail options: the standard rail and the high-pivot rail. The standard rail is generally used with a rigid header, while the high-pivot rail is used with a flex header, with the exception of a few specific makes and models of header and feeder house combinations.

Generally, the recommended spacing is one lifter per foot across the header. Harvesting some row or bedded crops, where lifters mounted to the row or a combination of different Flexifinger® lifters to maximize recovery have proven beneficial.

COMPATIBLE NYLON FINGERS



33058
NYLON FINGER
(1" x 5.5" / 26mm x 140mm)



33058P
NYLON FINGER, WITH PAD
(1" x 5.5" / 26mm x 140mm)



33060P
NYLON FINGER, WITH PAD
(1" x 7.75" / 26mm x 197mm)



33060P.1
NYLON FINGER, NO TAIL
(1" x 7.75" / 26mm x 197mm)



33064P
NYLON FINGER, FIBERGLASS CORE
(1" x 7.75" / 26mm x 197mm)

ADDITIONAL ACCESSORIES



32310 **32312** **32314**
CARRIAGE BOLTS
Used on a header that has carriage guard bolt from under the header, in order to mount the QD™ nut assembly.



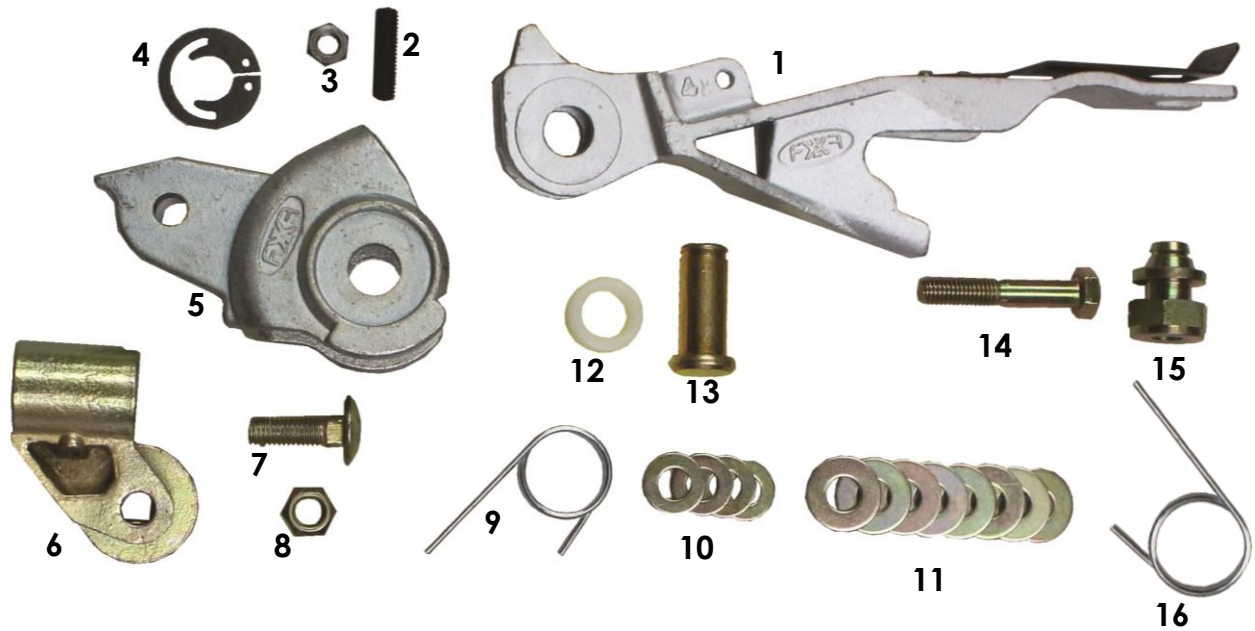
33080
BEAN LIFTING PAN
Attaches to the rail of the Flexifinger's® line of crop lifters and helps to pull edible bean pods above the knife and reduce shatter loss in dry field conditions by catching shelled seed that would otherwise be lost.



40090
OFF-SET BRACKET
Used to mount lifters at specific intervals on guards that do not align with a guard bolt, such as on systems with 4" (100mm) spacing between guards. Only required for special row-seeded configurations.

PARTS LISTING

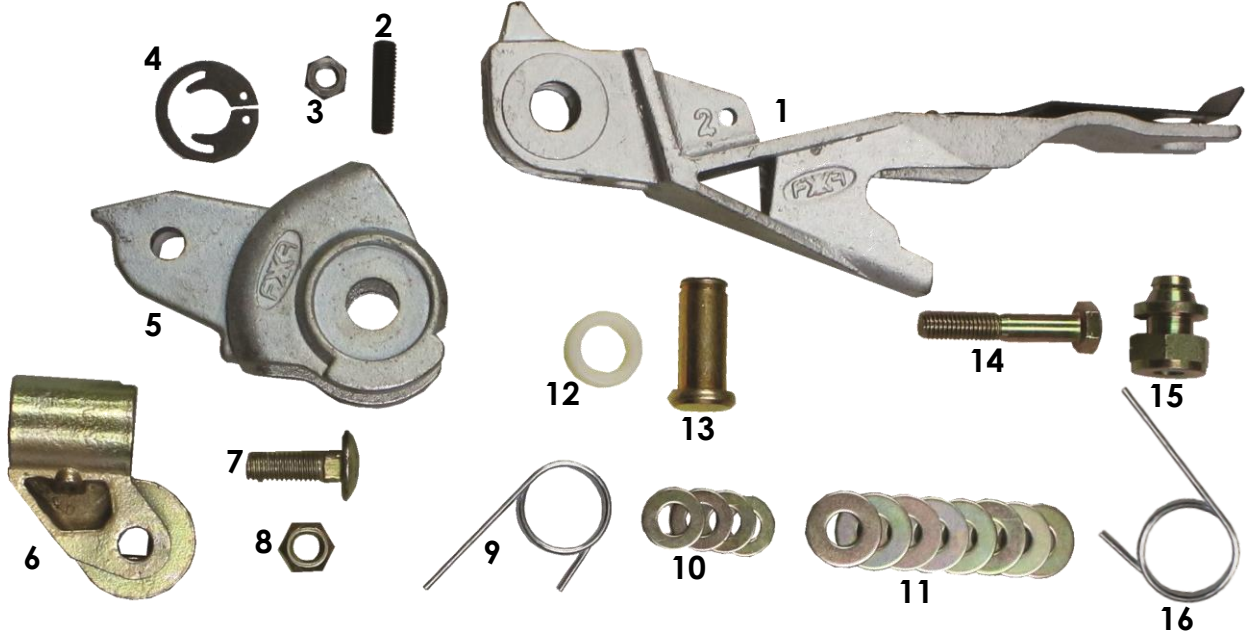
73100 – FlexxiFloat™ 100 Crop Lifter (Standard Rail)



PART #	DESCRIPTION	QTY	PART #	DESCRIPTION	QTY
1	20047.1 FlexxiFloat rail, cast	1	10	815058 SAE washers	4
1	20047 FlexxiFloat rail, cast NO SPRING	1	11	815008 USS washers	8
2	20616 30mm socket set screw	1	12	33002 Bushing for spring	1
3	20617 Jam nut	1	13	20603 Headed pin	1
4	20607 Snap ring	1	14	801240 55mm bolt	1
5	20540 Arm, 100 FlexxiFloat	1	15	32254 QD™ nut	1
6	40119 1.01" HD receptor	1	16	20508 20A Torsion spring	1
7	32302 10mm carriage bolt	1			
8	32303 10mm lock nut	1			
9	20504 8A Torsion spring (installed)	1			

PARTS LISTING

74100 – FlexxiFloat™ 100 Crop Lifter (High-Pivot Rail)



PART #	DESCRIPTION	QTY	PART #	DESCRIPTION	QTY
1	20043.1 FlexxiFloat rail HP, cast	1	10	815058 SAE washers	4
1	20043 FlexxiFloat rail HP, cast NO SPRING	1	11	815008 USS washers	8
2	20616 30mm socket set screw	1	12	33002 Bushing for spring	1
3	20617 Jam nut	1	13	20603 Headed pin	1
4	20607 Snap ring	1	14	801240 55mm bolt	1
5	20540 Arm, 100 FlexxiFloat	1	15	32254 QD™ nut	1
6	40119 1.01" HD receptor	1	16	20508 20A Torsion spring	1
7	32302 10mm carriage bolt	1			
8	32303 10mm lock nut	1			
9	20504 8A Torsion spring (installed)	1			

FLEXXIFLOAT™ 200 CROP LIFTER

73200



74200



INCLUDED IN THE BOX: LIFTER RAIL AND ARM; 32254-55 QD™ NUT ASSEMBLY; FLEXXIFLOAT™ SHOE SOLD SEPERATELY

FEATURES:

The FlexiFloat™ crop lifter series has been designed specifically for use where ground conditions are uneven. The FlexiFloat™ series has a pivot which allows the lifter to follow the fluctuations of the ground. This series attaches to the header using the same patented QD™ attaching technology as the rest of the Flexifinger family of lifter products. The FlexiFloat™ 200 is used in crops with a shorter stand and/or where the plants are more delicate, such as lentils, peas and beans. Made of sturdy cast metal, this lifter is capable of standing up to the most challenging ground conditions. The FlexiFloat™ system is available with two rail options: the standard rail and the high-pivot rail. The standard rail is generally used with a rigid header, while the high-pivot rail is used with a flex header, with the exception of a few specific makes and models of header and feeder house combinations.

USAGE:

Peas, lentils, chickpeas, black beans, pinto beans, soy beans, white beans

Because the FlexiFloat™ 200 is an all metal lifter, caution must be exercised by the combine operator to minimize the potential of damaging the header/ combine.

Generally, the recommended spacing is one lifter per foot across the header. Harvesting some row or bedded crops, where lifters mounted to the row or a combination of different Flexifinger® lifters to maximize recovery have proven beneficial.



COMPATIBLE SHOES

20231



ALL PURPOSE SHOE
(1" x 5.5" / 26mm x 140mm)

20232



FLOATATION SHOE
(1" x 5.5" / 26mm x 140mm)

20233



SMALL SEED SHOE
(1" x 7.75" / 26mm x 197mm)

20234



LONG SHOE (SINGLE HOLE)
(1" x 7.75" / 26mm x 197mm)

20235



LONG SHOE
(1" x 7.75" / 26mm x 197mm)

20236



HEAVY SHOE
(1" x 7.75" / 26mm x 197mm)



ADDITIONAL ACCESSORIES

32310



CARRIAGE BOLTS

Used on a header that has carriage guard bolt from under the header, in order to mount the QD™ nut assembly.

32312



32314



33080



BEAN LIFTING PAN

Attaches to the rail of the Flexifinger's® line of crop lifters and helps to pull edible bean pods above the knife and reduce shatter loss in dry field conditions by catching shelled seed that would otherwise be lost.

40090

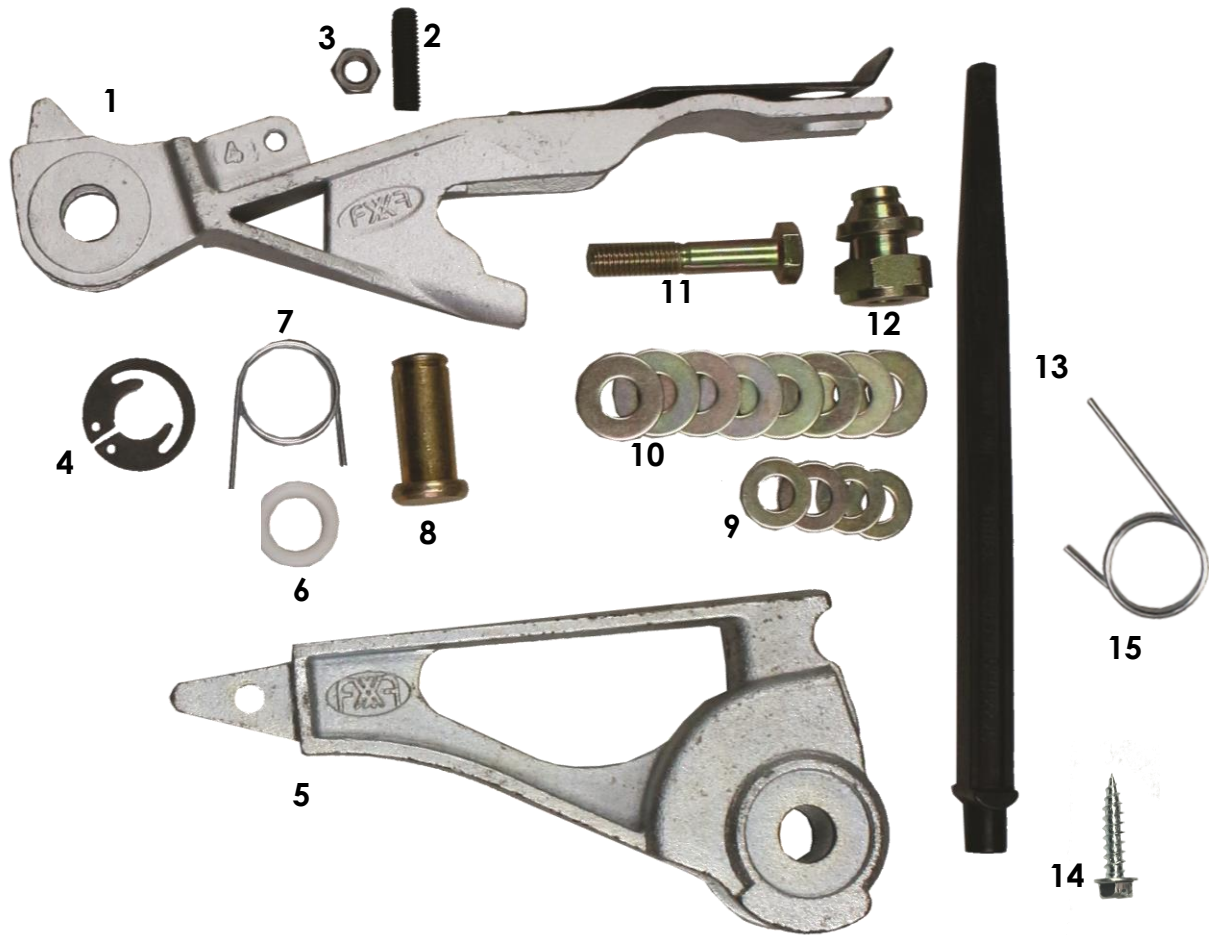


OFF-SET BRACKET

Used to mount lifters at specific intervals on guards that do not align with a guard bolt, such as on systems with 4" (100mm) spacing between guards. Only required for special row-seeded configurations.

PARTS LISTING

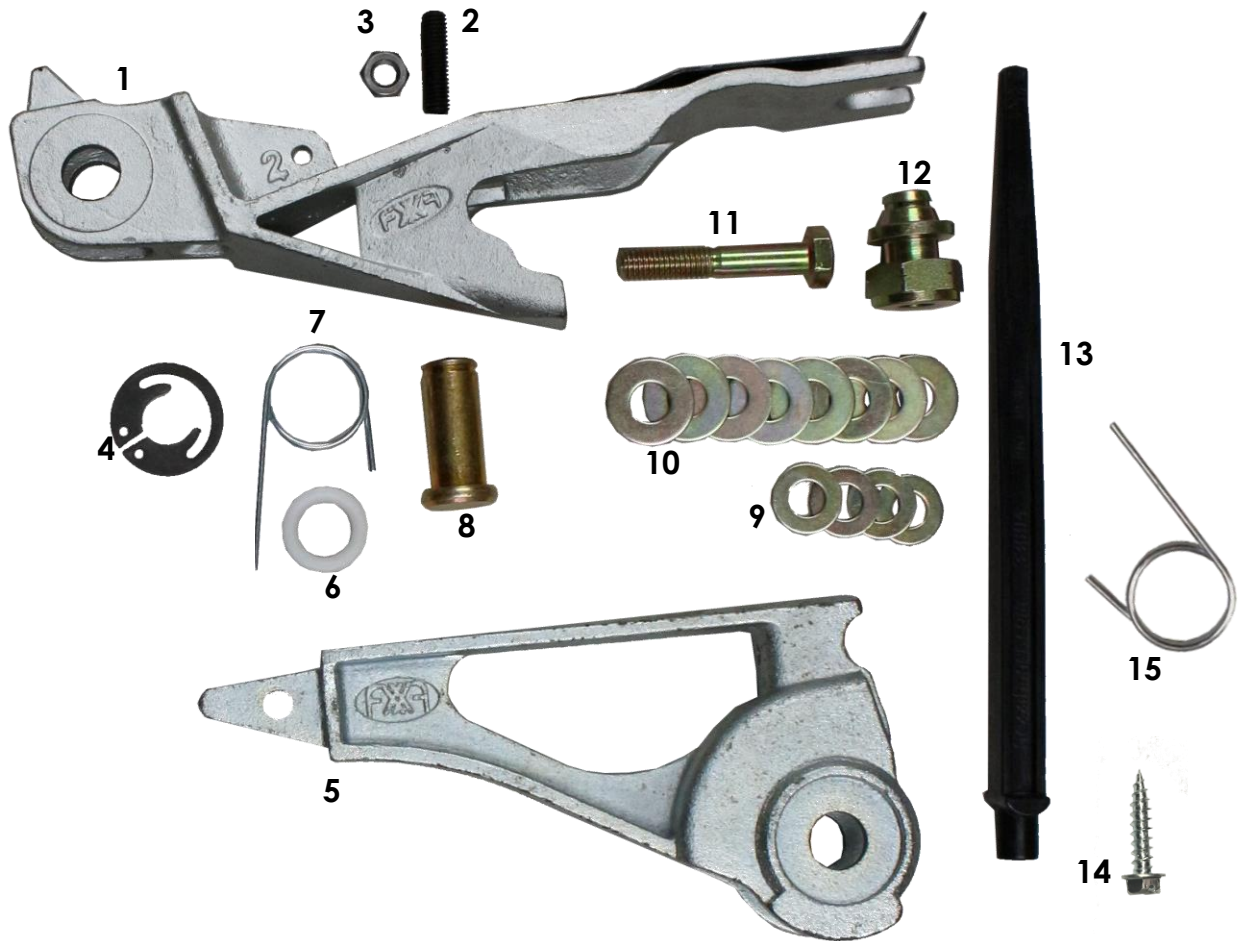
73200 – FlexxiFloat™ 200 Crop Lifter (Standard Rail)



PART #	DESCRIPTION	QTY	PART #	DESCRIPTION	QTY
1	20047.1 FlexxiFloat rail, cast	1	10	815008 USS washers	8
1	20047 FlexxiFloat rail, cast NO SPRING	1	11	801240 55mm bolt	1
2	20616 30mm socket set screw	1	12	32254 QD™ nut	1
3	20617 Jam nut	1	13	33004 Tail, nylon FlexxiFloat	1
4	20607 Snap ring	1	14	20620 Screw, #12 tapping	1
5	20546 Arm, 200 FlexxiFloat	1	15	20508 20A Torsion spring	1
6	33002 Bushing for spring	1			
7	20504 8A Torsion spring (installed)	1			
8	20603 Headed pin	1			
9	815058 SAE washers	4			

PARTS LISTING

74200 – FlexxiFloat™ 200 Crop Lifter (High-Pivot Rail)



PART #	DESCRIPTION	QTY	PART #	DESCRIPTION	QTY
1	20043.1 FlexxiFloat rail HP, cast	1	10	815008 USS washers	8
1	20043 FlexxiFloat rail HP, cast NO SPRING	1	11	801240 55mm bolt	1
2	20616 30mm socket set screw	1	12	32254 QD™ nut	1
3	20617 Jam nut	1	13	33004 Tail, nylon FlexxiFloat	1
4	20607 Snap ring	1	14	20620 Screw, #12 tapping	1
5	20546 Arm, 200 FlexxiFloat	1	15	20508 20A Torsion spring	1
6	33002 Bushing for spring	1			
7	20504 8A Torsion spring (installed)	1			
8	20603 Headed pin	1			
9	815058 SAE washers	4			

FLEXXIFLOAT™ 250 CROP LIFTER

73250



74250



INCLUDED IN THE BOX: LIFTER RAIL AND ARM; 32254-55 QD™ NUT ASSEMBLY; FLEXXIFLOAT™ SHOE SOLD SEPERATELY

FEATURES:

The FlexiFloat™ crop lifter series has been designed specifically for use where ground conditions are uneven. The FlexiFloat™ series has a pivot which allows the lifter to follow the fluctuations of the ground. This series attaches to the header using the same patented QD™ attaching technology as the rest of the Flexifinger family of lifter products. The FlexiFloat™ 250 is used on taller, heavier foliage crops. Made of sturdy cast metal, this lifter is capable of standing up to the most challenging ground conditions. The FlexiFloat™ system is available with two rail options: the standard rail and the high-pivot rail. The standard rail is generally used with a rigid header, while the high-pivot rail is used with a flex header, with the exception of a few specific makes and models of header and feeder house combinations.

USAGE:

Some pulses, cereals, rice, oilseed, forage, hemp and other specialty crops

Because the FlexiFloat™ 200 is an all metal lifter, caution must be exercised by the combine operator to minimize the potential of damaging the header/ combine.

Generally, the recommended spacing is one lifter per foot across the header. Harvesting some row or bedded crops, where lifters mounted to the row or a combination of different Flexifinger® lifters to maximize recovery have proven beneficial.



COMPATIBLE SHOES

20231



ALL PURPOSE SHOE
(1" x 5.5" / 26mm x 140mm)

20232



FLOATATION SHOE
(1" x 5.5" / 26mm x 140mm)

20233



SMALL SEED SHOE
(1" x 7.75" / 26mm x 197mm)

20234



LONG SHOE (SINGLE HOLE)
(1" x 7.75" / 26mm x 197mm)

20235



LONG SHOE
(1" x 7.75" / 26mm x 197mm)

20236



HEAVY SHOE
(1" x 7.75" / 26mm x 197mm)



ADDITIONAL ACCESSORIES

32310



CARRIAGE BOLTS

Used on a header that has carriage guard bolt from under the header, in order to mount the QD™ nut assembly.

32312



32314



33080



BEAN LIFTING PAN

Attaches to the rail of the Flexifinger's® line of crop lifters and helps to pull edible bean pods above the knife and reduce shatter loss in dry field conditions by catching shelled seed that would otherwise be lost.

40090

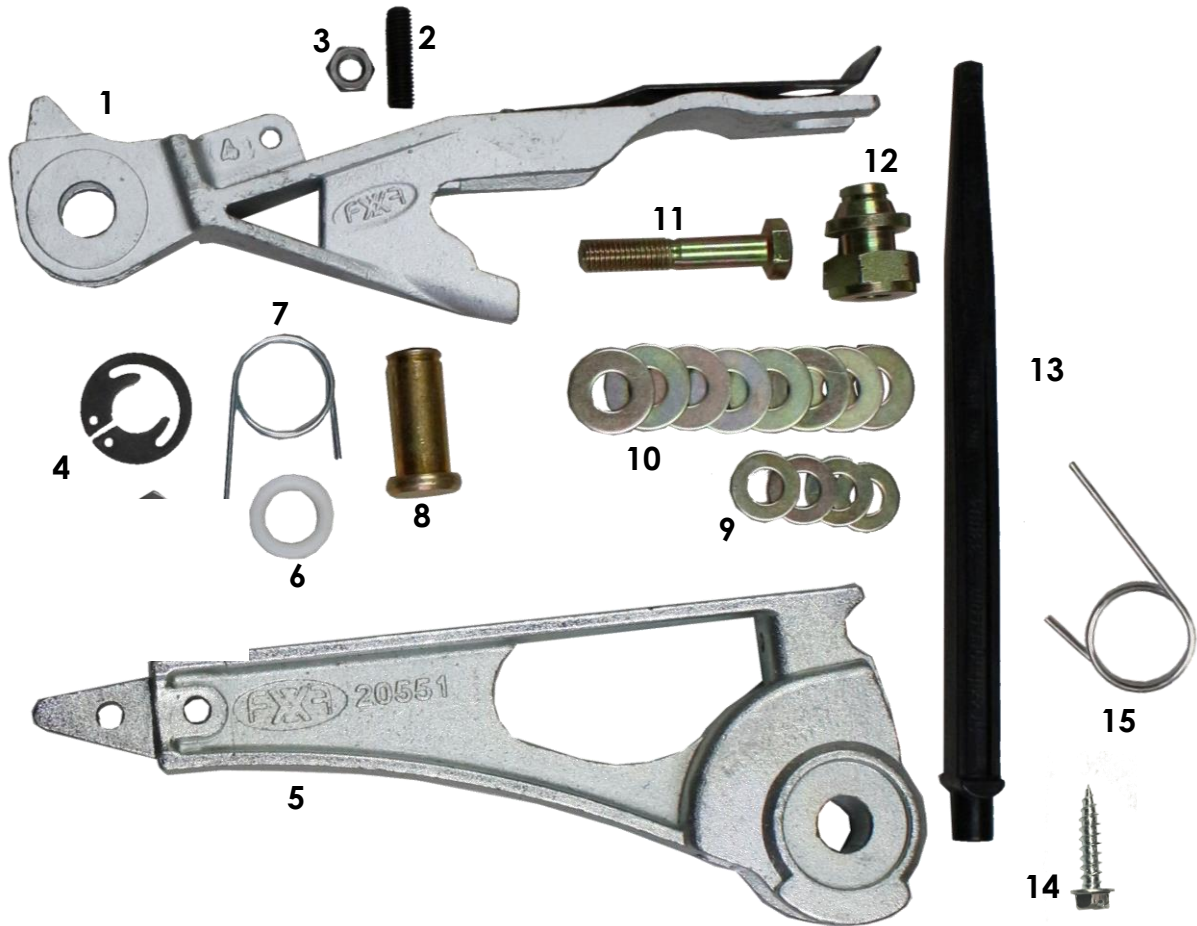


OFF-SET BRACKET

Used to mount lifters at specific intervals on guards that do not align with a guard bolt, such as on systems with 4" (100mm) spacing between guards. Only required for special row-seeded configurations.

PARTS LISTING

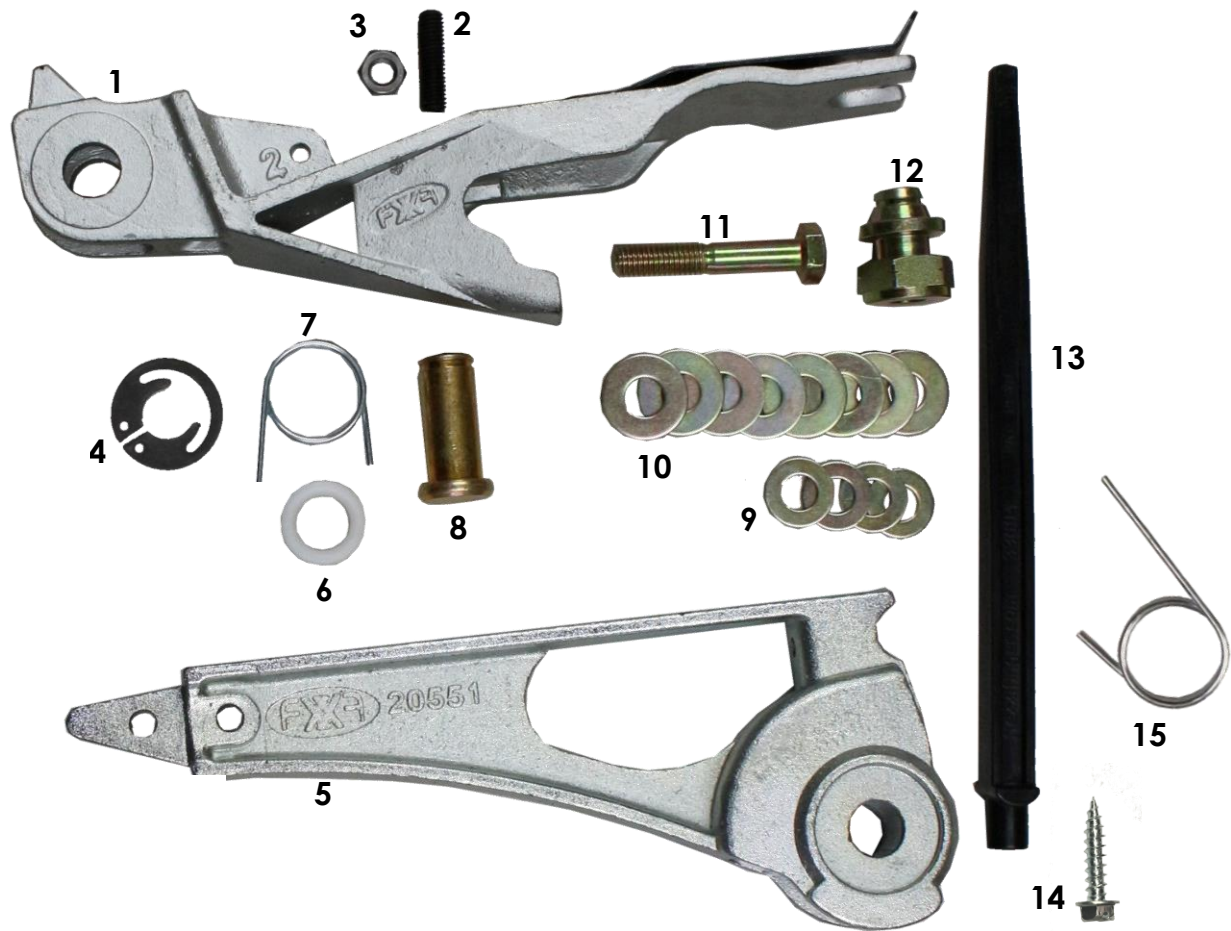
73250 – FlexxiFloat™ 250 Crop Lifter (Standard Rail)



PART #	DESCRIPTION	QTY	PART #	DESCRIPTION	QTY
1	20047.1 FlexxiFloat rail, cast	1	10	815008 USS washers	8
1	20047 FlexxiFloat rail, cast NO SPRING	1	11	801240 55mm bolt	1
2	20616 30mm socket set screw	1	12	32254 QD™ nut	1
3	20617 Jam nut	1	13	33004 Tail, nylon FlexxiFloat	1
4	20607 Snap ring	1	14	20620 Screw, #12 tapping	1
5	20551 Arm, 250 FlexxiFloat	1	15	20508 20A Torsion spring	1
6	33002 Bushing for spring	1			
7	20504 8A Torsion spring (installed)	1			
8	20603 Headed pin	1			
9	815058 SAE washers	4			

PARTS LISTING

74250 – FlexxiFloat™ 250 Crop Lifter (High-Pivot Rail)



PART #	DESCRIPTION	QTY	PART #	DESCRIPTION	QTY
1	20043.1 FlexxiFloat rail HP, cast	1	10	815008 USS washers	8
1	20043 FlexxiFloat rail HP, cast NO SPRING	1	11	801240 55mm bolt	1
2	20616 30mm socket set screw	1	12	32254 QD™ nut	1
3	20617 Jam nut	1	13	33004 Tail, nylon FlexxiFloat	1
4	20607 Snap ring	1	14	20620 Screw, #12 tapping	1
5	20551 Arm, 250 FlexxiFloat	1	15	20508 20A Torsion spring	1
6	33002 Bushing for spring	1			
7	20504 8A Torsion spring (installed)	1			
8	20603 Headed pin	1			
9	815058 SAE washers	4			

TRIPLE S™ EUROPEAN CROP LIFTER

70400



INCLUDED IN THE BOX: LIFTER RAIL, BARREL NUT AND RISER; 32254-55 QD™ NUT ASSEMBLY

FEATURES:

Triple S™ series fits all systems that have a guard finger in front of the knife because of a universal-fit rail that attaches to the header. The unique eyestrapped method of attaching the lifter's arm and riser to the rail creates a highly adjustable product that can be angled to suit your header or crop type and will allow the lifters to be configured on the header to work in unison. As with all Flexifinger crop lifters, the Triple S™ crop lifters use our patented QD™ attaching and detaching technology and can be removed and or installed in 3 – 5 minutes per header, after the initial installation. The Triple S™ European Lifters (patent pending), are designed to harvest taller, heavier crops that are lying on the ground due to weather or insect damage. This lifter can leave 70mm – 100mm (3" – 4") stubble. The Triple S™ European™ can get under the crop canopy of low lying crop and lift the crop above the knife to increase recovery.

USAGE:

Cereals, oilseed, forage and other specialty crops

Because the Triple S™ European is an all metal lifter, caution must be exercised by the combine operator to minimize the potential of damaging the header/ combine.

Generally, the recommended spacing is one lifter per foot across the header. Harvesting some row or bedded crops, where lifters mounted to the row or a combination of different Flexifinger® lifters to maximize recovery have proven beneficial.



ADDITIONAL ACCESSORIES

32310



CARRIAGE BOLTS

Used on a header that has carriage guard bolt from under the header, in order to mount the QD™ nut assembly.

32312



32314



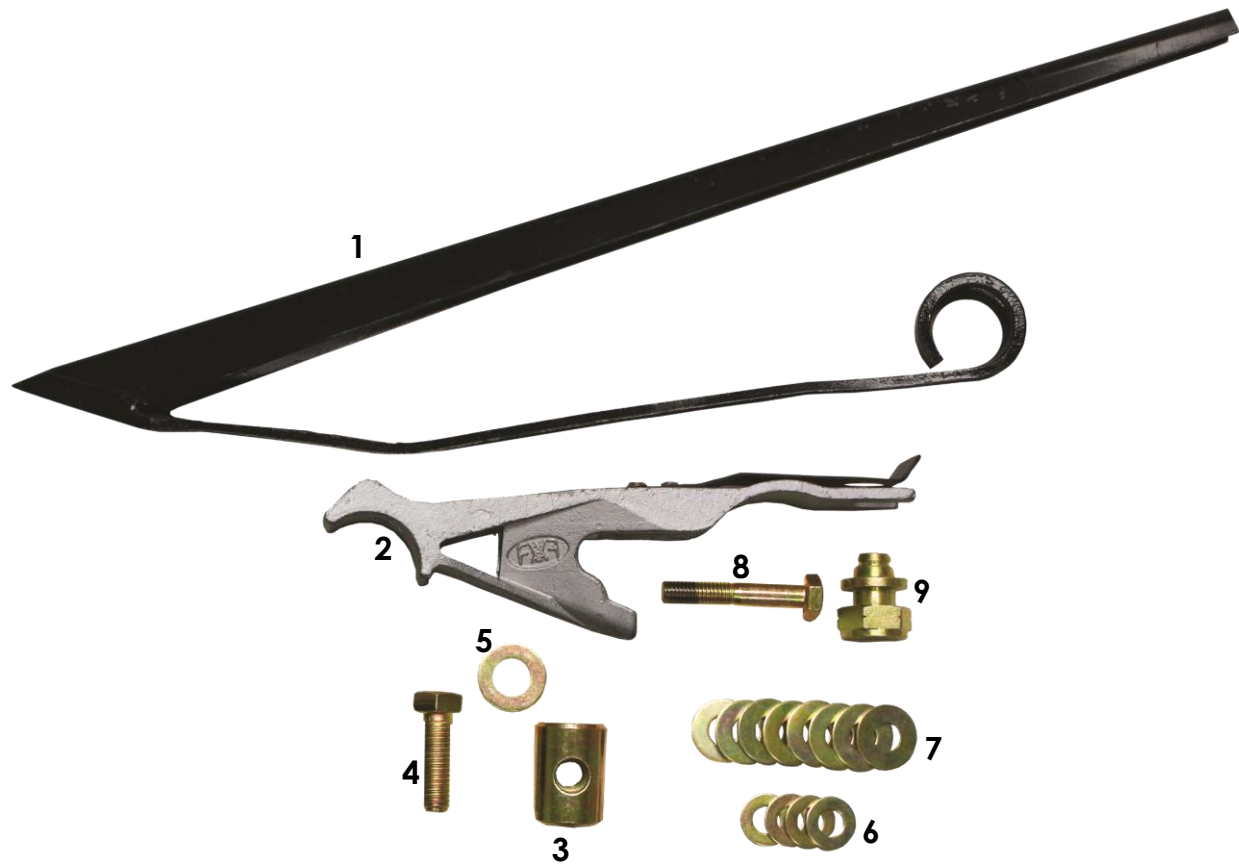
40090



OFF-SET BRACKET

Used to mount lifters at specific intervals on guards that do not align with a guard bolt, such as on systems with 4" (100mm) spacing between guards. Only required for special row-seeded configurations.

PARTS LISTING 70400 – Triple S™ European Crop Lifter



PART #	DESCRIPTION	QTY	PART #	DESCRIPTION	QTY
1	40400	Eye strap arm, European	1		
2	20048.1	Triple S Rail	1		
2	20048	Triple S Rail NO SPRING	1		
3	20060	Barrel nut	1		
4	800617	½-13*1.50 Nut, full thread	1		
5	815066	½ SAE Flat washer	1		
6	815058	SAE washers	4		
7	815008	USS washers	8		
8	801240	55mm bolt	1		
9	32254	QD™ nut	1		

TRIPLE S™ MIDCUT™ CROP LIFTER



INCLUDED IN THE BOX: LIFTER RAIL, BARREL NUT AND RISER; 32254-55 QD™ NUT ASSEMBLY; INCLUDES 33049 NYLON FINGER

FEATURES:

Triple S™ series fits all systems that have a guard finger in front of the knife because of a universal-fit rail that attaches to the header. The unique eyestrapped method of attaching the lifter's arm and riser to the rail creates a highly adjustable product that can be angled to suit your header or crop type and will allow the lifters to be configured on the header to work in unison. As with all Flexifinger crop lifters, the Triple S™ crop lifters use our patented QD™ attaching and detaching technology and can be removed and or installed in 3 – 5 minutes per header, after the initial installation. The Triple S™ MidCut™ lifter is the most efficient lifter in the series when it comes to sawfly and wheat stem maggot damaged crops. This lifter leaves a medium height stubble, approximately 140mm (5 1/2"). The Triple S™ MidCut™ significantly increases crop salvage, recovering broken off stems close to the ground. The shoe and nylon finger combination allows the Triple S™ MidCut™ to glide over cracks and small holes, making it a safer crop lifter, even on irregular ground conditions.

USAGE:

Cereals, oilseed, forage and other specialty crops

Because the Triple S™ MidCut™ is an all metal lifter, caution must be exercised by the combine operator to minimize the potential of damaging the header/ combine.

Generally, the recommended spacing is one lifter per foot across the header. Harvesting some row or bedded crops, where lifters mounted to the row or a combination of different Flexifinger® lifters to maximize recovery have proven beneficial.

COMPATIBLE NYLON FINGERS



33049
MIDCUT™ NYLON FINGER
(.635" x 3" / 16mm x 76mm)

ADDITIONAL ACCESSORIES



32310 32312 32314

CARRIAGE BOLTS

Used on a header that has carriage guard bolt from under the header, in order to mount the QD™ nut assembly.



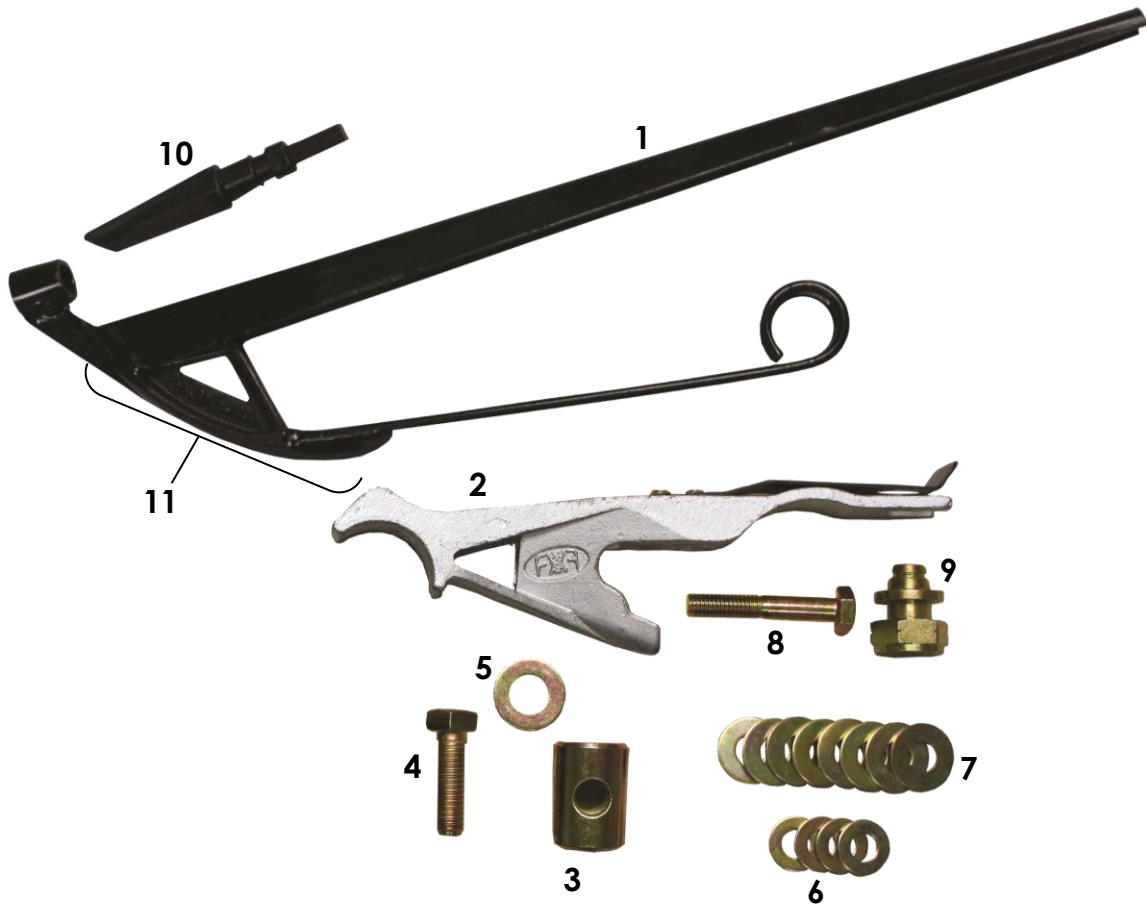
40090

OFF-SET BRACKET

Used to mount lifters at specific intervals on guards that do not align with a guard bolt, such as on systems with 4" (100mm) spacing between guards. Only required for special row-seeded configurations.

PARTS LISTING

70402 – Triple S™ MidCut™ Crop Lifter



PART #	DESCRIPTION	QTY	PART #	DESCRIPTION	QTY
1 40402	Eye strap arm, MidCut	1	10 33049	Nylon finger, 3", no tail	1
2 20048.1	Triple S Rail	1	11 20224	Shoe, MidCut cast steel	1
2 20048	Triple S Rail NO SPRING				
3 20060	Barrel nut	1			
4 800617	½-13*1.50 Nut, full thread	1			
5 815066	½ SAE Flat washer	1			
6 815058	SAE washers	4			
7 815008	USS washers	8			
8 801240	55mm bolt	1			
9 32254	QD™ nut	1			

TRIPLE S™ HIGHLIFT™ CROP LIFTER

70406



INCLUDED IN THE BOX: LIFTER RAIL, BARREL NUT AND RISER; METAL TAIL; 32254-55 QD™ NUT ASSEMBLY

FEATURES:

Triple S™ series fits all systems that have a guard finger in front of the knife because of a universal-fit rail that attaches to the header. The unique eyestrapp method of attaching the lifter's arm and riser to the rail creates a highly adjustable product that can be angled to suit your header or crop type and will allow the lifters to be configured on the header to work in unison. As with all Flexifinger crop lifters, the Triple S™ crop lifters use our patented QD™ attaching and detaching technology and can be removed and or installed in 3 – 5 minutes per header, after the initial installation. The Triple S™ HighLift™ is used in tall, heavy crops. The Triple S™ HighLift™ is recommended for auger headers and generally leaves a 70mm-100mm (3"-4") stubble. This series will lift the heads higher above the knife than the MidCut™ or European™ and will help stand the crop up in front of the auger for more efficient threshing. With the Triple S™ HighLift™, you can achieve higher ground speeds in most situations. The adjustable tail length allows you to customize the lifter to suit your crop and field conditions, and provides adjustments that can be helpful on "Vario" style headers.

USAGE:

Cereals, oilseed, forage and other specialty crops

Because the Triple S™ HighLift™ is an all metal lifter, caution must be exercised by the combine operator to minimize the potential of damaging the header/ combine.

Generally, the recommended spacing is one lifter per foot across the header. Harvesting some row or bedded crops, where lifters mounted to the row or a combination of different Flexifinger® lifters to maximize recovery have proven beneficial.



ADDITIONAL ACCESSORIES



32310

CARRIAGE BOLTS

Used on a header that has carriage guard bolt from under the header, in order to mount the QD™ nut assembly.



32312



32314

40090

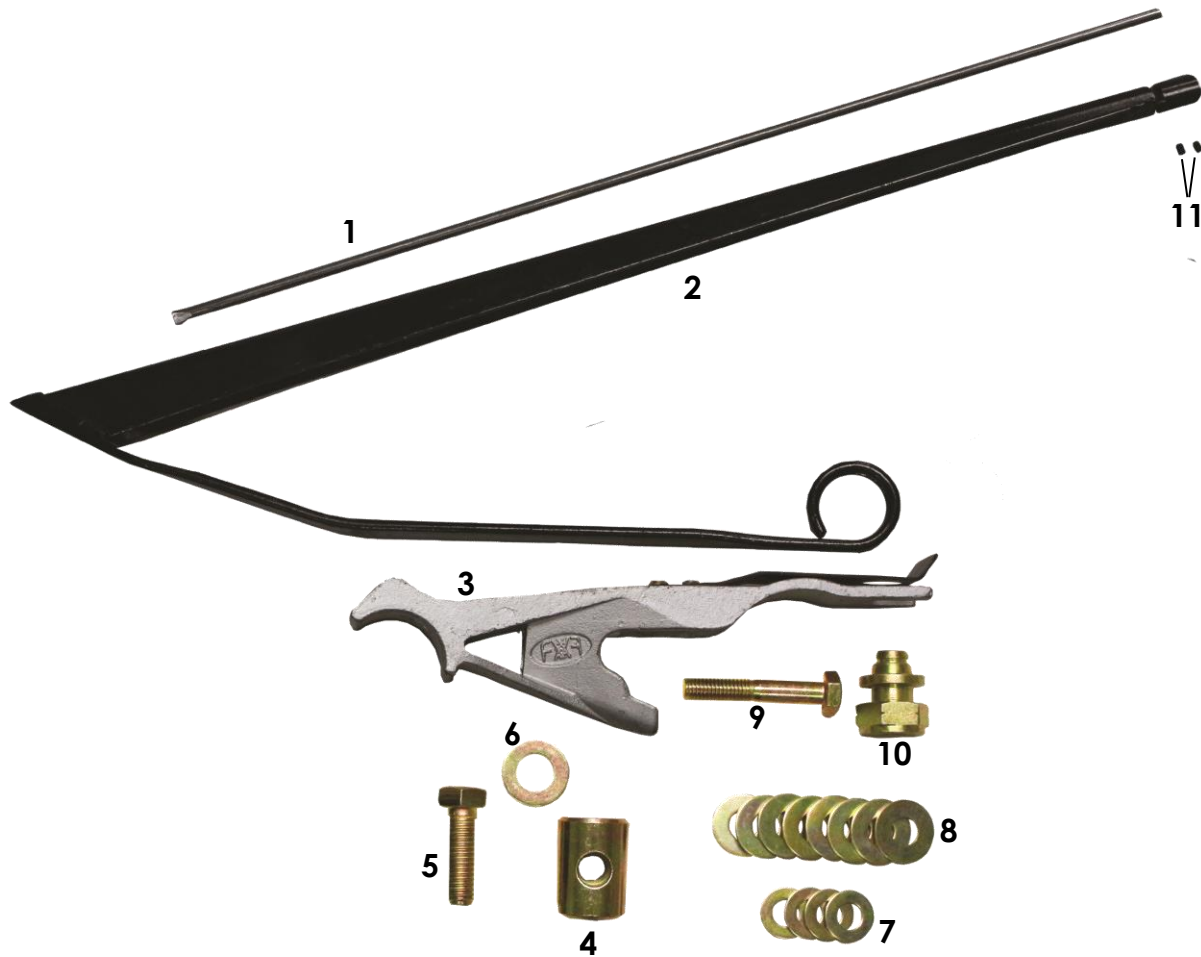


OFF-SET BRACKET

Used to mount lifters at specific intervals on guards that do not align with a guard bolt, such as on systems with 4" (100mm) spacing between guards. Only required for special row-seeded configurations.

PARTS LISTING

70406 – Triple S™ HighLift™ Crop Lifter



PART #	DESCRIPTION	QTY	PART #	DESCRIPTION	QTY		
1	32321	Spring steel tail	1	10	32254	QD™ nut	1
2	40406	Eye strap arm, HighLift	1	11	32296	Set screw DFO	2
3	20048.1	Triple S Rail	1				
3	20048	Triple S Rail NO SPRING					
4	20060	Barrel nut	1				
5	800617	½-13*1.50 Nut, full thread	1				
6	815066	½ SAE Flat washer	1				
7	815058	SAE washers	4				
8	815008	USS washers	8				
9	801240	55mm bolt	1				

BEAN LIFTING PAN

33080



INCLUDED IN THE BOX: BEAN LIFTING PAN ONLY

33080KT



INCLUDED IN THE BOX: BEAN LIFTING PAN AND BOLT KIT

33080KT1



INCLUDED IN THE BOX: BEAN LIFTING PAN AND WELD-ON KIT

FEATURES:

The Bean Lifting Pan attaches to the rail of the Flexifinger's® line of crop lifters and helps to:

- Pull edible bean pods above the knife
- Reduce shatter loss in dry field conditions by catching shelled seed that would otherwise be lost

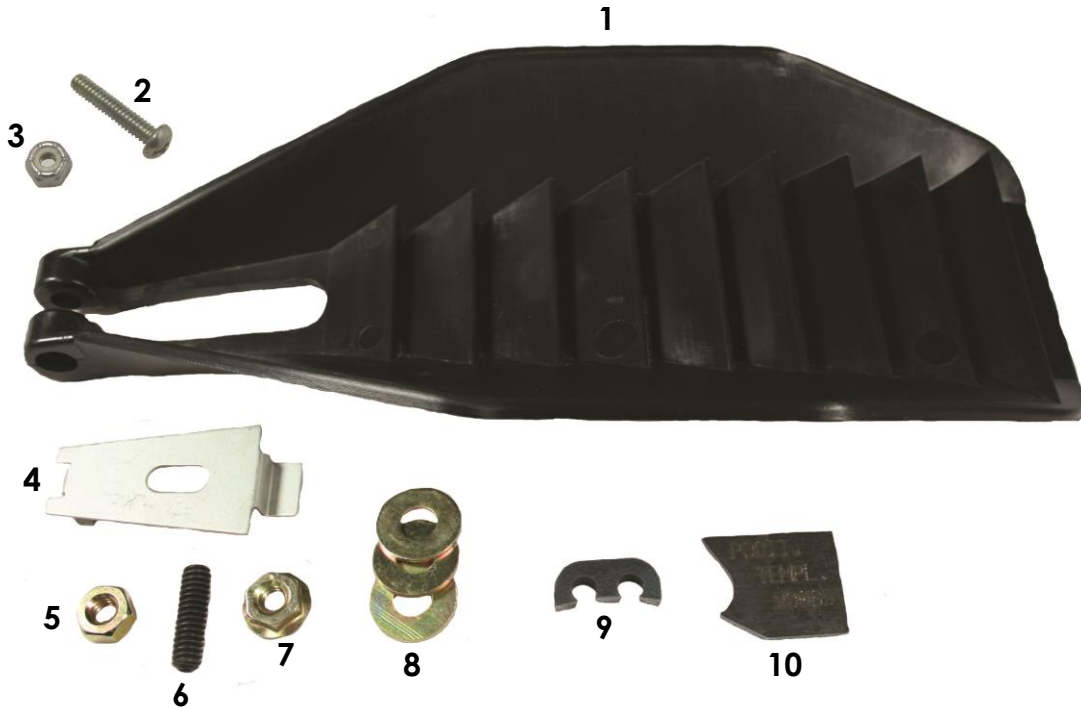
USAGE:

Edible beans and soy beans

Mount directly on the bracket of the Flexifinger® crop lifter.

Compatible with all Flexifinger® crop lifters.

PARTS LISTING 33080 – Bean Lifting Pan Accessory



PART #	DESCRIPTION	QTY	PART #	DESCRIPTION	QTY
1	33080	Bean lifting pan	1		
2	810916	Round head machine screw	1		
3	813902	10-24 Lock nut	1		
4	32286	Lifting pan clip	1		
5	32295	Jam nut	1		
6	32294	Socket set screw	1		
7	812504	Serrated flange nut	1		
8	815000	1/4 USS Flat Washer	3		
9	20065*	Pan template	1		
10	20064*	Weld-on pan card attachment	1		

* = included in 33080KT1 (weld-on kit) only

OFFSET BRACKET

40090KT



INCLUDED IN THE BOX: OFFSET BRACKET, QD™ NUT, BOLTS

FEATURES:

On headers that have 4" (100mm) spacing between the guards, there will be instances where the guard bolts do not line up with the guard point, making the installation of a lifter at specific intervals impossible.

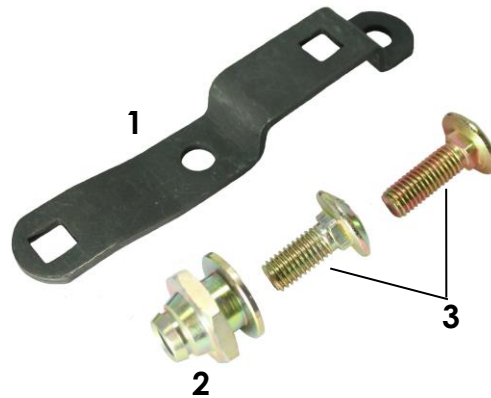
Flexifinger's® Off-set Bracket will allow the combine operator to install the QD™ nut on any guard point on the header, regardless of the lifter spacing.

USAGE:

Use of the Flexifinger® Off-set Bracket is only required in row-seeded crops under certain circumstances and with specific headers.

For more information on whether the use of the Off-set Bracket is required for a specific harvesting situation, please contact our Service & Support Team.

PARTS LISTING 40090KT – Offset bracket kit



PART #	DESCRIPTION	QTY	PART #	DESCRIPTION	QTY
1	20090	Offset bracket	1		
2	32253	QD™ nut, short	1		
3	32298	Carriage bolt, 10mm short	2		
4					
5					
6					
7					
8					
9					
10					

CARRIAGE BOLT OPTIONS

32310



INCLUDED IN THE BOX: 32310 CARRIAGE BOLT; NOT INCLUDED WITH CROP LIFTER PURCHASED

FEATURES:

This Carriage bolt is for select headers that have a poly skid plate held on by a 7/16" (11mm) carriage step bolt from under the header, which tapers to 10mm in order to mount the QD™ nut assembly.

USAGE:

Select Macdon, Case IH, Massey and New Holland headers. Please refer to our fitting chart for more details.

32312



INCLUDED IN THE BOX: 32312 CARRIAGE BOLT; NOT INCLUDED WITH CROP LIFTER PURCHASED

FEATURES:

This Carriage bolt is for a header that uses a 7/16" (11mm) carriage bolt from under the header, which tapers to 10mm in order to mount the QD™ nut assembly.

USAGE:

Select Macdon, Case IH, Massey and New Holland headers. Please refer to our fitting chart for more details.

32314



INCLUDED IN THE BOX: 32314 CARRIAGE BOLT; NOT INCLUDED WITH CROP LIFTER PURCHASED

FLEXXIFINGER® QUICKER PICKER MODEL 400

77101



FEATURES:

The Flexifinger® Quicker Picker is the first rotary-style rock picker designed for skid loader use. Using a universal quick-attach plate, the Flexifinger® Quicker Picker can be mounted on virtually any skid steer or loader.

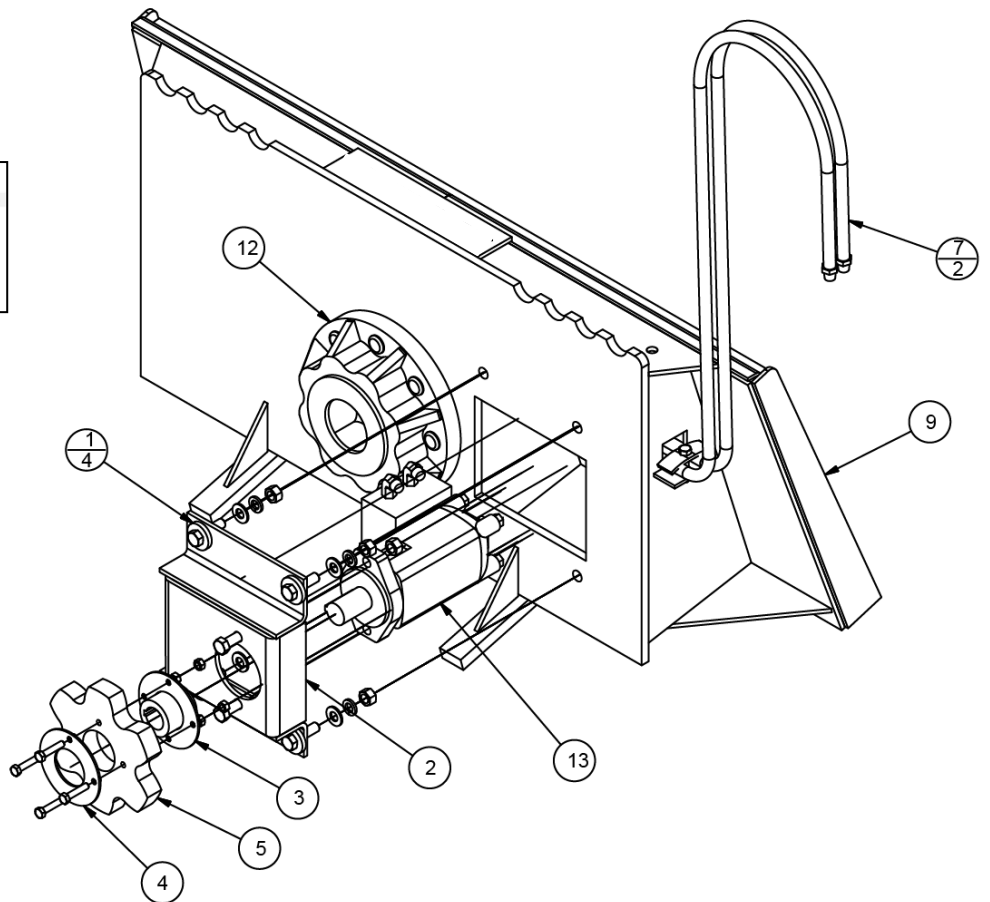
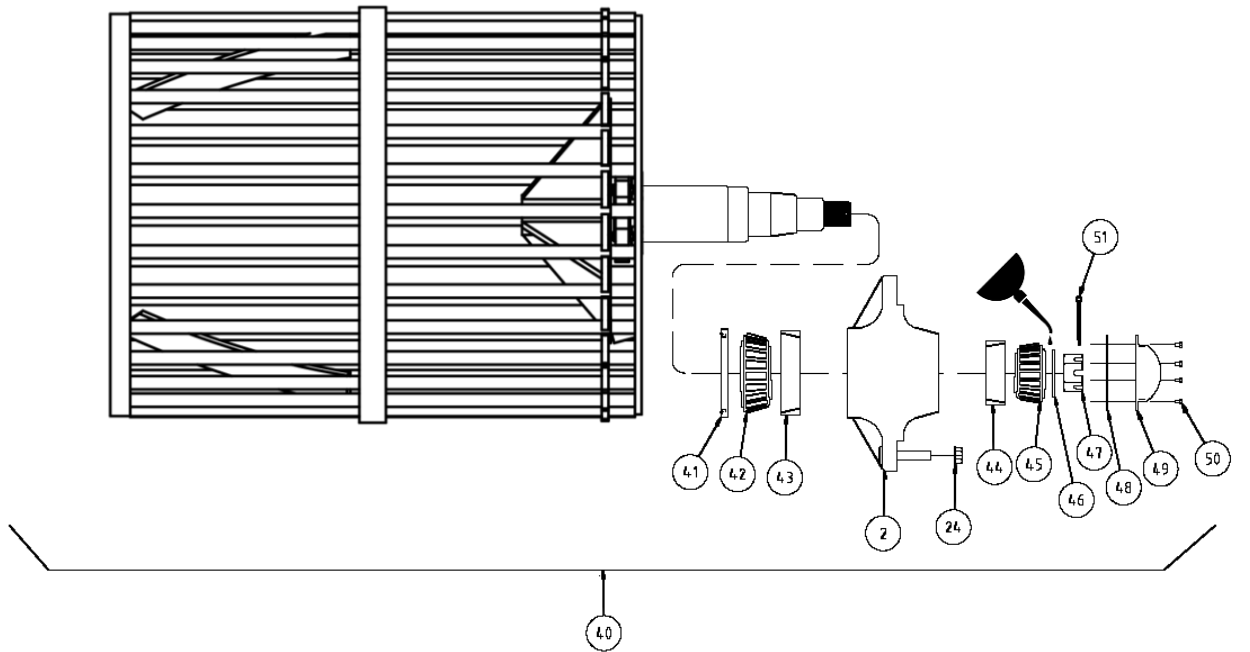
To clear an area of debris, the operator scoops up the debris and, using the loader's auxiliary hydraulic controls, spins the barrel. This spinning motion causes the debris to collide inside the barrel which knocks off excess soil and dirt. Any soil or debris smaller than 2.5" (63mm) in diameter will fall between the bars, leaving only debris larger than 2.5" (64mm) in the barrel. The Flexifinger® Quicker Picker rotary rock picker is ideal for use in several industries including agricultural, industrial, maintenance, mining, landscaping and forestry.

SPECIFICATIONS:

Drum length	36"	91.44 cm
Drum diameter	30"	76.20 cm
Capacity	up to 900 lbs*	up to 408 kg*
Drive	Direct	
Spin direction	One-way (counter clockwise)	
Spindle size	3" (7,500 lbs)	7.62 cm (3,402 kg)
Rock size	approx. 2" to 28"	approx. 5 cm to 71 cm
Flow required	Std. flow – 7 USGal. per min.	Std. flow – 26.49 litres per min.
Loader lift required	1,660 lbs	752 kg
Weight	760 lbs approx.	345 kg approx.
Hydraulic hose	0.5" NPT	13mm NPT
Hydraulic couplers	Not included	

PARTS LISTING

77101 – Flexifinger® Quicker Picker Rotary Rock Picker Model 400



KEY	PART NO.	PART NAME	QTY	REMARKS
1	777-035	WASHER, MOTOR MOUNT	4	
2	777-054	WELDMENT, MOTOR MOUNT BOX	1	
3	777-058	WELDMENT, SPROCKET MOUNT HUB	1	
4	777-059	SPROCKET MOUNT PLATE	1	
5	777-061	PLASTIC SPROCKET	1	
7	777-072	HOSE, HYDRAULIC, ½" MNPT X ½" JIC X 84" LG	2	
9	777-007	MOUNTING ASSEMBLY MODEL 400	1	
12	7588LM	AG HUB	1	
13	777-078	MOTOR ASSEMBLY	1	
40	777-001	CAGE ASSEMBLY	1	
41	777-110	SEAL	1	
42	777-111	INNER BEARING, CONE	1	
43	777-112	INNER BEARING, CUP	1	
44	777-113	OUTER BEARING, CUP	1	
45	777-114	OUTER BEARING, CONE	1	
46	777-115	WASHER	1	
47	777-116	CASTLE NUT	1	
48	777-117	GASKET	1	

FLEXXIFINGER® QUICKER PICKER MODEL 800

77102



FEATURES:

The Flexifinger® Quicker Picker is the first rotary-style rock picker designed for skid loader use. Using a universal quick-attach plate, the Flexifinger® Quicker Picker can be mounted on virtually any skid steer or loader.

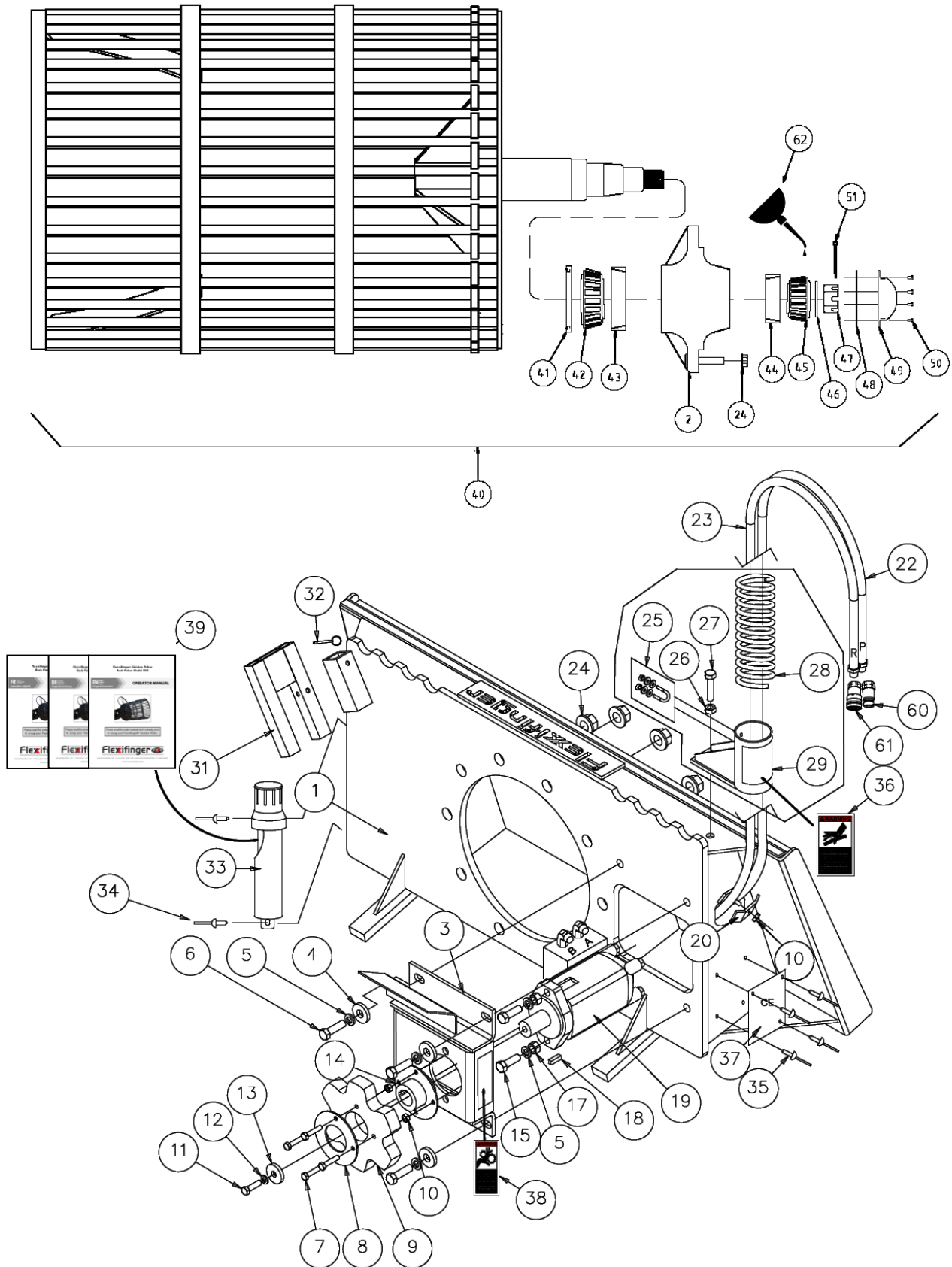
To clear an area of debris, the operator scoops up the debris and, using the loader's auxiliary hydraulic controls, spins the barrel. This spinning motion causes the debris to collide inside the barrel which knocks off excess soil and dirt. Any soil or debris smaller than 2.5" (63mm) in diameter will fall between the bars, leaving only debris larger than 2.5" (64mm) in the barrel. The Flexifinger® Quicker Picker rotary rock picker is ideal for use in several industries including agricultural, industrial, maintenance, mining, landscaping and forestry.

SPECIFICATIONS:

Drum length	48"	122 cm
Drum diameter	36"	91.5 cm
Capacity	up to 2,000 lbs*	up to 408 kg*
Drive	Direct	
Spin direction	One-way (counter clockwise)	
Spindle size	4.5" (20,000 lbs)	11.43 cm (9,072 kg)
Rock size	approx. 2" to 34"	approx. 5 cm to 76 cm
Flow required	Std. flow – 7 USGal. per min.	Std. flow – 26.49 litres per min.
Loader lift required	3,165 lbs	1,442 kg
Weight	1165 lbs approx.	528 kg approx.
Hydraulic hose	0.5" NPT	13mm NPT
Hydraulic couplers	IN US: Not included IN CANADA: Flat-faced couplers included	

PARTS LISTING

77102 – Flexifinger® Quicker Picker Rotary Rock Picker Model 800

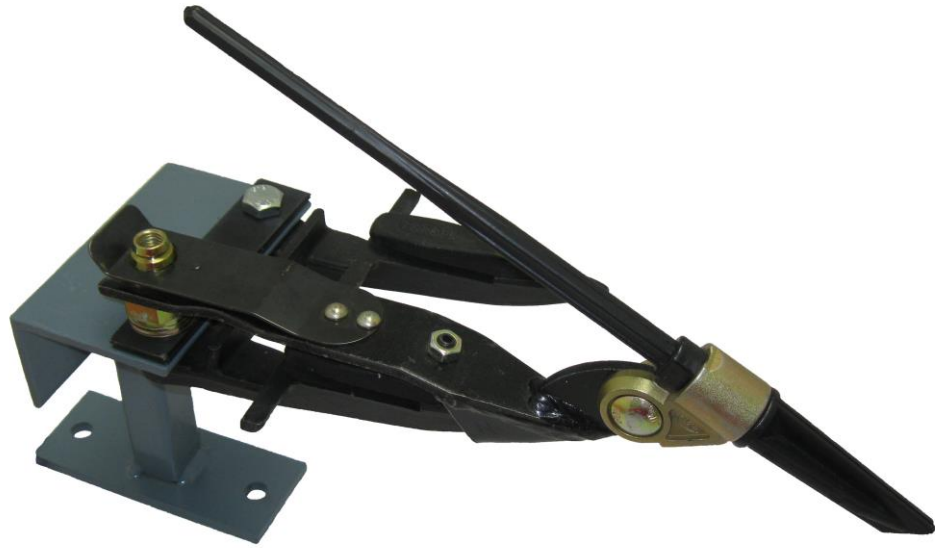


KEY	PART NO.	PART NAME	QTY	REMARKS
1	777-010	MOUNTING ASSEMBLY	1	
2	777-076	10 BOLT AG HUB	1	
3	777-054	WELDMENT, MOTOR MOUNT BOX	1	
4	815070	WASHER	4	
5	815074	SPLIT WASHER	6	
6	800617	CAP SCREW	4	101 N-M (75 LB/FT) (DRY)
7	800116	CAP SCREW	4	23 N-M (17 LB/FT) (DRY)
8	777-059	SPROCKET MOUNT PLATE	1	
9	777-061	SPROCKET	1	
10	812612	NUT	5	
11	800212	CAP SCREW	1	40 N-M (30 LB/FT) (DRY)
12	815060	SPLIT WASHER	1	
13	840010	HEAVY WASHER	1	
14	777-058	WELDMENT, SPROCKET MOUNT HUB	1	
15	800620	CAP SCREW	2	101 N-M (75 LB/FT) (DRY)
17	812902	NUT	2	
18	777-100	KEY	1	
19	777-078	MOTOR, HYD DRIVE, QUICKER PICKER	1	
20	777-066	HOSE CLAMP, TOP	1	
22	777-101	HYDRAULIC HOSE, PRESSURE	1	
23	777-102	HYDRAULIC HOSE, RETURN	1	
24	777-105	FLANGE NUT	8	542 N-M (400 LB/FT) (DRY)
25	777-084	U-BOLT ASSEMBLY	1	13 N-M (10 LB/FT) (DRY)
26	812912	NUT	1	
27	800616	CAP SCREW	1	101 N-M (75 LB/FT) (DRY)
28	777-072	SPRING, 30" LONG	1	
29	777-067	WELDMENT, SPRING MOUNT	1	
30	777-085	SPRING ASSEMBLY, INC 25 TO 29, W/O HOSES	1	
31	777-027	STABILIZER BRACKET	1	
32	777-029	RETAINER PIN	1	
33	777-026	MANUAL TUBE	1	
34	824038	MANUAL TUBE RIVET	2	
35	824036	PLATE RIVET	4	
36	777-305	HYDRAULIC HAZARD LABEL	1	
37	777-300	SERIAL NUMBER PLATE	1	
38	777-306	CRUSH HAZARD LABEL	1	
39*	777-203EN	OPERATOR MANUAL – EN (ENGLISH)	1	
39*	777-203FR	OPERATOR MANUAL – FR (FRENCH)	1	
39*	777-203DE	OPERATOR MANUAL – DE (GERMAN)	1	
40	777-001	CAGE ASSEMBLY	1	
41	777-110	SEAL	1	
42	777-111	INNER BEARING, CONE	1	
43	777-112	INNER BEARING, CUP	1	
44	777-113	OUTER BEARING, CUP	1	
45	777-114	OUTER BEARING, CONE	1	
46	777-115	WASHER	1	
47	777-116	CASTLE NUT	1	
48	777-117	GASKET	1	
49	777-118	DUST CAP, 4 BOLT	1	
50	777-119	CAP SCREW	4	
51	777-120	COTTER PIN	1	
60	777-QD-HTMAN88F	FLAT FACED UNIVERSAL HYDRAULIC COUPLER, PRESSURE	1	
61	777-QD-HTMAC88F	FLAT FACED UNIVERSAL HYDRAULIC COUPLER, RETURN	1	
62		PETRO-CANADA PRECISION XL 3MOLY EP1 OR EQUIVALENT		

*Additional manual(s) in the official language(s) of the country are included where applicable.

FLEXXIFINGER[®] PRODUCT DISPLAY SINGLE-POSITION DISPLAY

99520

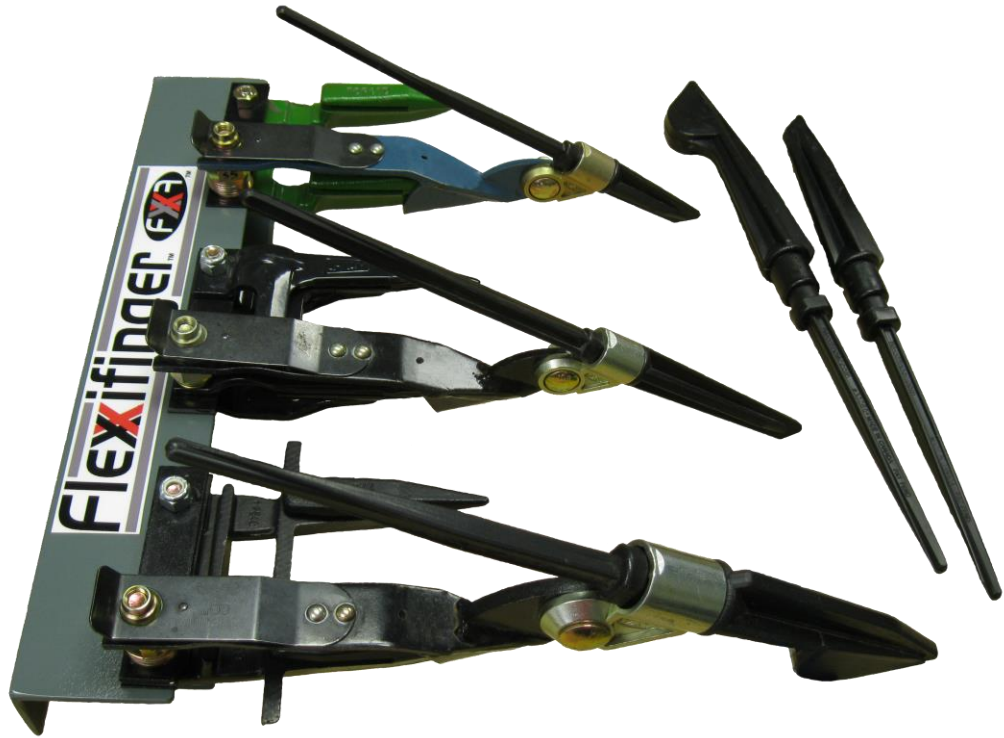


INCLUDED IN THE BOX: SINGLE POSITION DISPLAY. LIFTER(S) SOLD SEPERATELY. GUARD MUST BE SUPPLIED BY THE DEALER.

PART #	DESCRIPTION	QTY	PART #	DESCRIPTION	QTY
99520	Single-position display	1			

FLEXXIFINGER® PRODUCT DISPLAY: THREE-POSITION DISPLAY

99515



INCLUDED IN THE BOX: 3-POSITION DISPLAY, 3 FLEXXIFINGER® CROP LIFTERS, 5 FLEXXIFINGER® NYLON FINGERS & 1 FLEXXIFLOAT™ SHOE. GUARDS MUST BE SUPPLIED BY THE DEALER.

PART #	DESCRIPTION	QTY	PART #	DESCRIPTION	QTY
99515	Three-position display	1	70062	Pulse Lifter – J	1
90102	Flexifinger decal	1	33048	Nylon finger, 2.75"/70mm	
73200	FlexiFloat™ 200 Lifter	1	33050	Nylon finger, 2.75"/120mm	
20231.1	FF All-purpose shoe w/ pin	1			
70050	Heavy Duty Lifter - N	1			
33058	Nylon Finger, 5.5"/140mm	1			
33058P	Nylon Finger w/ pad, 5.5"/140mm	1			
33060P	Nylon Finger w/ pad, 7.75"/197mm	1			

FLEXXIFINGER® PRODUCT DISPLAY: FIVE-POSITION DISPLAY WITH 3 LIFTERS

99510



INCLUDED IN THE BOX: 5-POSITION DISPLAY, WORKMATE, 3 FLEXXIFINGER® CROP LIFTERS, 5 FLEXXIFINGER® NYLON FINGERS & 1 FLEXXIFLOAT™ SHOE. GUARDS MUST BE SUPPLIED BY THE DEALER.*

*At time of purchase of a 5-guard display system, two additional Flexifinger® Crop Lifters can be purchased by the dealer at a 50% discount.

PART #	DESCRIPTION	QTY	PART #	DESCRIPTION	QTY
99515	Five-position display	1	70062	Pulse Lifter – J	1
90102	Flexifinger decal	1	33048	Nylon finger, 2.75"/70mm	1
73200	FlexiFloat™ 200 Lifter	1	33050	Nylon finger, 2.75"/120mm	1
20231.1	FF All-purpose shoe w/ pin	1			
70050	Heavy Duty Lifter - N	1			
33058	Nylon Finger, 5.5"/140mm	1			
33058P	Nylon Finger w/ pad, 5.5"/140mm	1			
33060P	Nylon Finger w/ pad, 7.75"/197mm	1			

FLEXXIFINGER® PRODUCT DISPLAY: FIVE-POSITION DISPLAY WITH 7 LIFTERS

99512



INCLUDED IN THE BOX: 5-POSITION DISPLAY, WORKMATE, 7 FLEXXIFINGER® CROP LIFTERS, 3 FLEXXIFINGER® NYLON FINGERS & 5 FLEXXIFLOAT™ SHOES. GUARDS MUST BE SUPPLIED BY THE DEALER.

PART #	DESCRIPTION	QTY	PART #	DESCRIPTION	QTY
99515	Five-position display	1	70040	DFO™ Lifter – N	1
90102	Flexifinger decal	1	70400	Triple S™ European Lifter	1
73200	FlexxiFloat™ 200 Lifter	1	70406	Triple S™ HighLift Lifter	1
74250	FlexxiFloat™ 250 Lifter, HP	1	20231.1	FF All-purpose shoe w/ pin	1
70050	Heavy Duty Lifter - N	1	20232.1	FF Floatation shoe w/ pin	1
70052	Heavy Duty Lifter – J	1	20233.1	FF Small seed shoe w/ pin	1
33058	Nylon Finger, 5.5"/140mm	1	20235.2	FF Long shoe w/ pins	1
33058P	Nylon Finger w/ pad, 5.5"/140mm	1	20236.1	FF Heavy shoe w/ pin	1
33060P	Nylon Finger w/ pad, 7.75"/197mm	1			

SERVICE TIPS

Troubleshooting | Crop Lifters

Situation: The user is having difficulty finding the right amount of washers to shim up the QD™ nut.

Suggestion: The washers are not used for angle adjustment, rather to ensure the spring steel rail of the lifter is sliding in level (without binding) in the slot in the nut. If it is difficult to install and uninstall the lifter with ease, there is likely an incorrect amount of washers being used. Consult the instruction manual to find approximately how many washers are recommended for the particular guard.

Situation: The washers will not fit overtop the rear portion of the Schumacher (SCH) guard.

Suggestion: Due to the unique profile of the Schumacher guard, the larger type USS washers will not fit properly. Therefore, use 3-4 of the smaller SAE washers instead.

Situation: The nylon fingers will not fit into the provided receptors.

Suggestion: Place the lifter in a vise with the rail spring pointing towards the ceiling. Tighten the gold-colored receptor – it is only loosely attached at the factory. Do not overtighten because it will require adjustment once all the fingers are in place. Slide the nylon finger tail-first into the receptor. Match up the flat section at the top of the gold-colored receptor with the flat section on the finger's receptor section. The fit is very snug. If it is difficult to push the finger into the receptor, spray receptor piece of the finger with a multi-purpose lubricant (such as WD-40). Insert the finger into the receptor and use a rubber mallet or a hammer to tap it into place. Once the finger has bottomed, rotate it 90 degrees with pliers to lock it into place. Ensure that the fingers have been installed with the right side down.

Situation: The provided bolts are too long, preventing the QD™ nut from threading tight on the guard.

Suggestion: Try adding a few washers, which will remove visible threads, and allow the nut to be tightened to the guard. If the lifter can still be easily installed and uninstalled from the header, you have fixed the problem. If not, call our office to make certain you have the right length of bolt for your particular guard.

Situation: The user is having difficulty adjusting the correct angle of the nylon finger.

Suggestion: Like most harvesting tools, there is often no one universal means of adjustment. Longtime Flexifinger® users however have developed a short, simple procedure to ensure the optimal performance of the lifters. Please keep in mind that this method is designed for reasonably dry conditions and may need alteration for use in damp circumstances or particularly tough soil.

- Take your combine into the field you intend on harvesting.
- Remove the lifters from the header.
- Combine a few hundred yards into the field, making the appropriate adjustments (header angle, reel speed/height, header height) so that you are doing the best possible job without the lifters on.
- Now reinstall the lifters and drop your header to the height at which you were just cutting.
- Lift the reel, secure it, and turn the combine off.
- Adjust three or four lifters on each end of the header so that the forward lifting point is approximately a thumb's width off the ground. Do the same for three or four lifters in the middle of the header, leaving all those in between unadjusted at this time.
- Using the three previous adjustments (each end of your header and the middle), take the high average of the forward lifting points. This will set a standard angle at both ends and in the middle. This averaging method is used, because, as we all know, not all ground is perfectly level, so finding an average angle is critical to ensuring consistent results.

- Adjust all the remaining lifters so that the forward lifting points are dead level with those which are averaged out.
- The lower your crop, the more you are going to have to make a judgment call as to just how much material you are prepared to leave behind in the field as compared to picking up more dirt or stones.
- Start combining, slowly moving ahead on what you have already cut. You should be able to see if the fingers need to be adjusted either up or down. If you feel that you would like to try them a little closer to the ground, try adjusting six or eight in a location that you can watch from the cab.
 - The inventor, Dave Dietrich prefers watching the lifting from the left of center because he is able to see the lifters as material feeds in the table as well as behind the header. This way he is able to see if lifter tracks are being left in the ground.
- Fine tune that lifting point so you are getting all the plant material you need without digging the nylon portion of the lifter into the ground. Even 1/8"/3mm can make a big difference whether you are getting under the plant material or conversely hitting the ground. When you have those six or eight working as good as can be expected, you can re-adjust the balance of the lifters to this "sweet spot" for your field.
- The lifters should be making contact with the ground, at very most, 20% to 25% of the time (less is preferable).

Situation: Breaking or bending a lot of nylon fingers.

Suggestion: Set screws or bolts should never be used with the black-colored N-series lifters or the FlexiFloat™ or Triple S™ Series Lifters. Use extreme caution when utilizing a bolt and/or set screw in the hole at the top of the Pulse Crop or Heavy Duty J lifter rail to create a snug fit on the guard. The lifter must remain free to move and free float about 1/4" – 1/2" (6mm – 13mm) up, down and side-to-side. This movement allows for greater flexibility in following any variations in ground conditions.

Situation: Dislodging more rocks than desired.

Suggestion: To begin, it is necessary to understand that you will dislodge more rocks with a lifter than without. With that being said, there are steps that can be taken to minimize this. Check whether or not the set screw is tight with the top of the guard. If it is, loosen the set screw so that there is between 1/8" – 1/4" (3mm – 6mm) of play between the bottom of that screw and the top of the guard. The simplest way to explain why is as follows: if the set screw is tight to the guard and the lifter makes contact with a stone, one of two things must give - either the rock or the lifter. By allowing the lifter to float up and down, and from side to side, the lifter can skip over rocks or dislodge them with lessened force, reducing the number of stones that kick up towards the cutter bar, and taking the stress off the nylon finger.

Situation: Plant material seems to be bunching up on the lifters, preventing it from feeding freely into the header.

Suggestion: There are two primary reasons why the lifter may be hindering the flow of plant material. First, follow our recommended steps for setting the proper angle of the nylon finger. If the finger is pointed too steeply downward, it will act like a comb and prevent plant material from smoothly feeding through the header. If this process does not immediately alleviate the problem, check to ensure the set screw is not tight to the guard. There should be between 1/8" – 1/4" (3mm – 6mm) of play between the bottom of that screw and the top of the guard. The movement in the lifter minimizes the friction created from plant material rubbing against the tail of the nylon finger, and assists in constant feeding. If both these suggestions fail, remove the lifters from the header, as all lifters have a tendency to plug up in tough or damp conditions. Some users have found taking every second lifter off has helped as well.

SERVICE TIPS

Set Screw & Jam Nut | Crop Lifters

Based on our experience as well as feedback from our end-users, we recommend that set screws are not used when installing Flexifinger® crop lifters. Removing the set screws allows the lifter to seesaw on the tip of the guard, resulting in fewer bent and broken fingers.

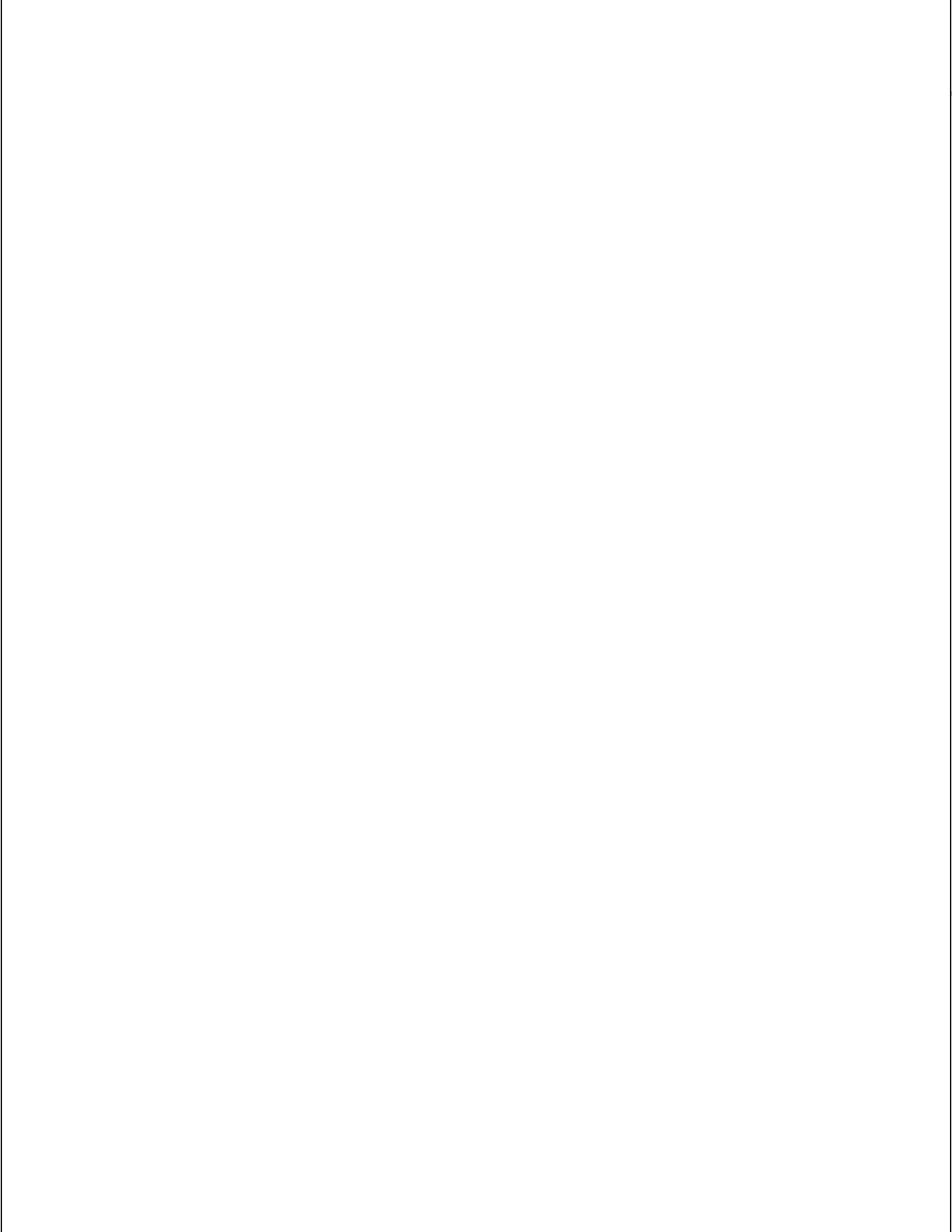
Flexifinger® does not include set screws with any N-series (black) crop lifters, however they are still included with our J-series (blue) crop lifters. The rail and snout portion of the lifter, which is the part that attaches and fits to the guard, is designed specifically to fit on most guard systems, depending on the fit-series that is correct for the header and knife system.

There are some exceptions where a set screw must be used to increase the contact between the guard and the crop lifter when the guard length is particularly short. These exceptions include:

- John Deere HydraFlex 635
- Caterpillar headers
- Lexion headers
- Claas headers
- Other select headers and/or knife systems

Some long-time end-users, who would have purchased Flexifinger® crop lifters a number of years ago may still want to use set screws, even with our N-series (black) lifters. If that's the case, we suggest that they leave at least 1/8"/3mm to 1/4"/6mm of space between the set screw and the guard.

Over-tightening the crop lifter to the guard creates more stress on the tip of the lifter in the event that an obstacle is encountered, such as a rock, a harder lump of dirt, a mole hill, etc. More stress on the lifter increases the chance of breaking or bending the lifter or causing damage to the header or combine.



SERVICE TIPS

Nylon Fingers | Crop Lifters

Flexifinger® nylon fingers are designed to fit tightly into the receptor. The nylon fingers have raised nubs to ensure a snug fit with the receptor.

This can pose an issue when initially installing the fingers into the receptors.

The most effective way to install the nylon fingers is:



- a. Place the lifter in a vise with the rail spring pointing towards the ceiling.



- b. Tighten the gold-colored receptor – it is only loosely attached at the factory. Do not overtighten because it will require adjustment once all the fingers are in place.



- c. Slide the nylon finger tail-first into the receptor. Match up the flat section at the top of the gold-colored receptor with the flat section on the finger's receptor section. See Diagram 1.

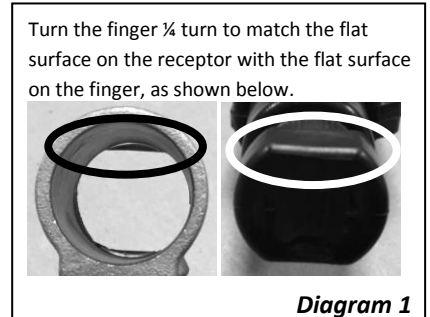
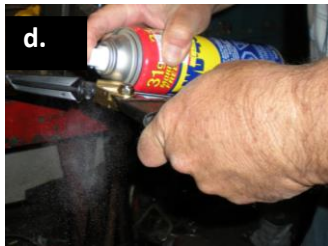


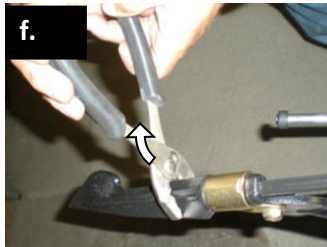
Diagram 1



- d. The fit is very snug. If it is difficult to push the finger into the receptor, spray receptor piece of the finger with a multi-purpose lubricant (such as WD-40).



- e. Insert the finger into the receptor and use a rubber mallet or a hammer to tap it into place.



- f. Once the finger has bottomed, rotate it 90 degrees with pliers to lock it into place. Ensure that the fingers have been installed with the right side down, as shown in Diagram 2.

The direction of the fingers once installed should be as follows:

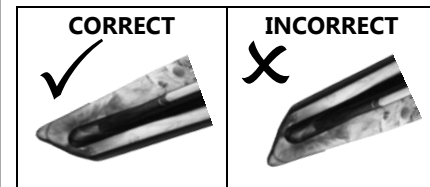


Diagram 2

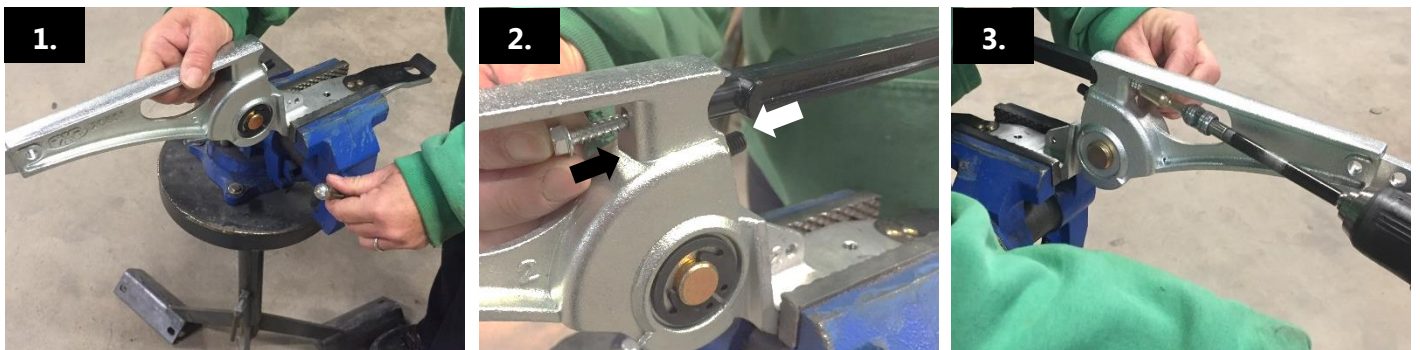
SERVICE TIPS

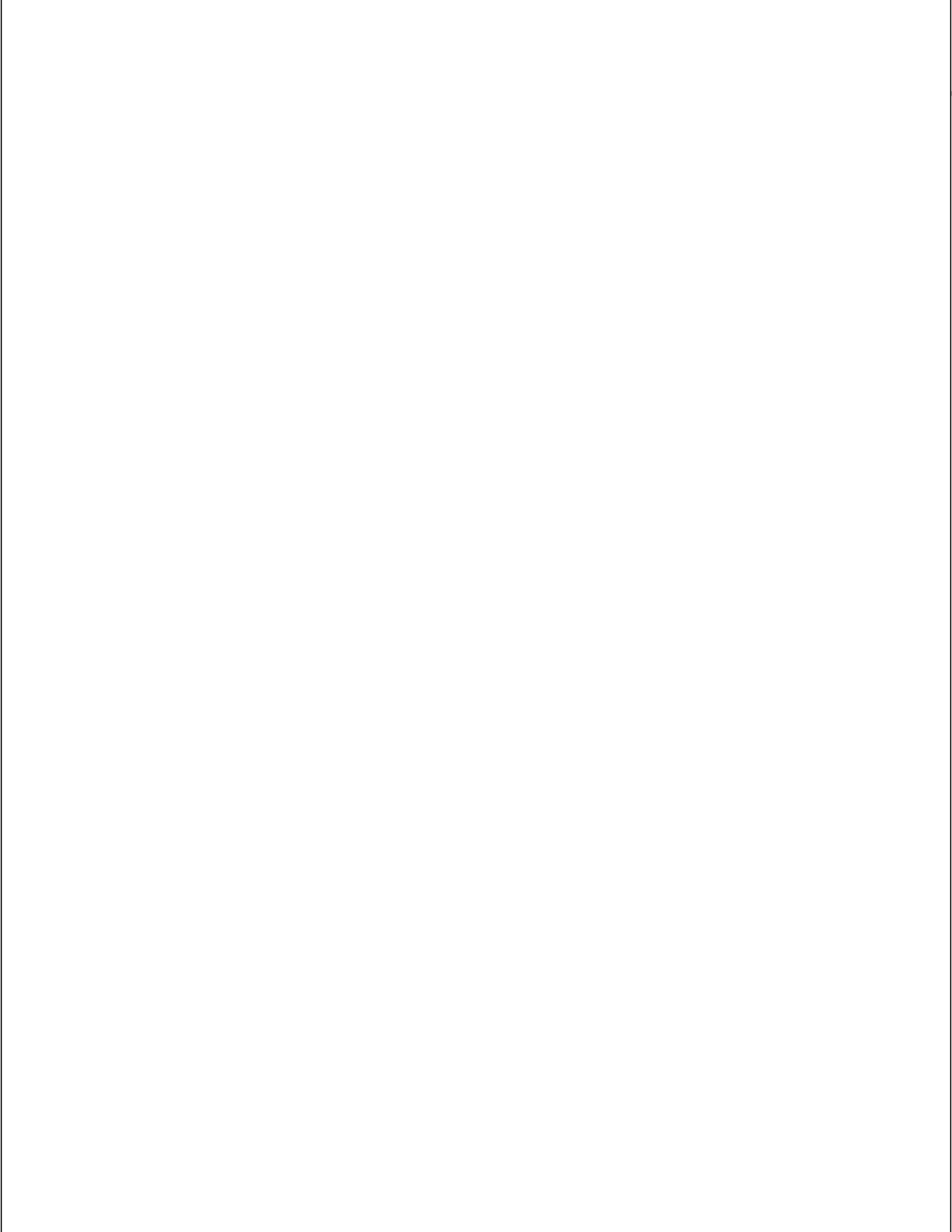
Installing FlexxiFloat™ Nylon Tail | Crop Lifters

FlexxiFloat™ Crop Lifters are now shipped with the tail removed so that you have the option to use the crop lifter with or without the tail. The tail can provide additional lift in lighter crop situations but is not recommended when harvesting heavy crops.

To install the tail on your crop lifter:

1. Tighten the rail of the crop lifter in a vise.
2. Insert the tenon of nylon finger into the slot at the back of the arm, with the rounded step of the tail fitting into the groove. Insert the self-tapping screw into the hole on the other side of the arm. (Refer to Photo 2.)
3. Using a drill or impact outfitted with an extension and a $\frac{5}{16}$ " socket, drill the screw into the tail.





SERVICE TIPS

Troubleshooting | Rock Pickers

Situation: The Flexifinger® Quicker Picker will not rotate.

Suggestion: Ensure that the "PRESSURE" hose is connected to the correct hose from the skid steer loader. If issue persists, please contact the Flexifinger Sales Support Team.

Situation: The Flexifinger® Quicker Picker is rotating in jerking motions.

Suggestion: Ensure that the "PRESSURE" hose is connected to the correct hose from the skid steer loader. If issue persists, please contact the Flexifinger Sales Support Team.

Situation: There is abnormal vibration occurring.

Suggestion: Stop both the Flexifinger® Quicker Picker and skid steer loader or tractor and inspect the possible issue. If there is large rock or other obstruction that is too large to fit into the barrel of the Flexifinger® Quicker Picker, reverse the skid steer loader to avoid. If there is rock or other obstruction that is the correct size to fit into the barrel of the Flexifinger® Quicker Picker, reverse the skid steer loader, reposition and attempt to scoop again. If issue persists, please contact the Flexifinger Sales Support Team.