

SERVICE TIPS

Nylon Fingers | Crop Lifters

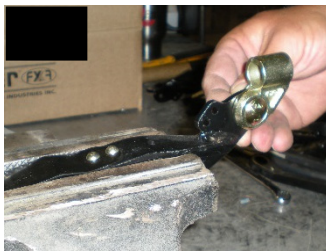
Flexifinger® nylon fingers are designed to fit tightly into the receptor. The nylon fingers have raised nubs to ensure a snug fit with the receptor.

This can pose an issue when initially installing the fingers into the receptors.

The most effective way to install the nylon fingers is:



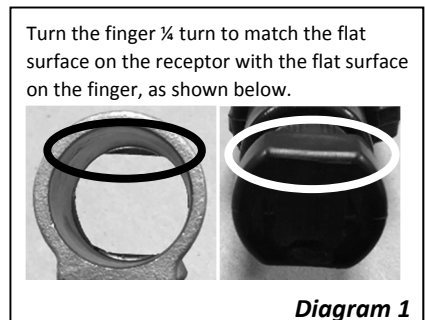
a. Place the lifter in a vise with the rail spring pointing towards the ceiling.



b. Tighten the gold-colored receptor – it is only loosely attached at the factory. Do not overtighten because it will require adjustment once all the fingers are in place.



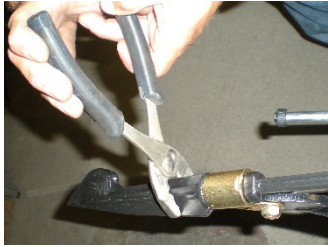
c. Slide the nylon finger tail-first into the receptor. Match up the flat section at the top of the gold-colored receptor with the flat section on the finger's receptor section. See Diagram 1.



d. The fit is very snug. If it is difficult to push the finger into the receptor, spray receptor piece of the finger with a multi-purpose lubricant (such as WD-40).



e. Insert the finger into the receptor and use a rubber mallet or a hammer to tap it into place.



f. Once the finger has bottomed, rotate it 90 degrees with pliers to lock it into place. Ensure that the fingers have been installed with the right side down, as shown in Diagram 2.

The direction of the fingers once installed should be as follows:

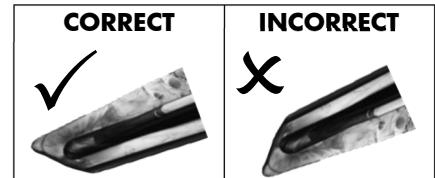


Diagram 2