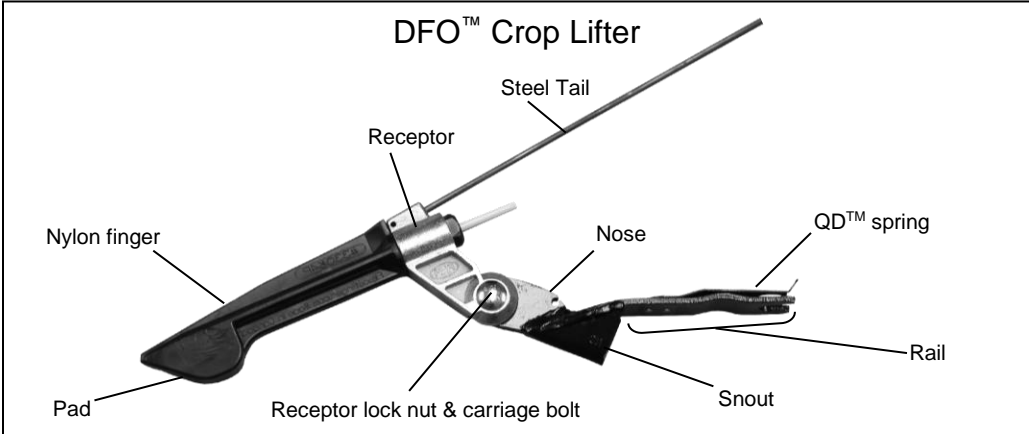
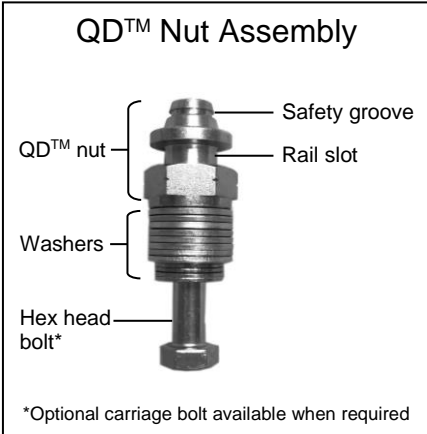


**Please read these instructions prior to installing and using your crop lifters.**

- NOTICE:** The Flexifinger® DFO™ crop lifter comes with the receptor assembled but only loosely attached. To adjust, loosen receptor lock nut and fine tune the angle of the receptor – once the correct angle has been set, tighten the lock nut as per Section 1 and Section 4. Contact the Flexifinger Sales & Support Team for further adjustment information.
- NOTICE:** If the combine operator experiences any difficulty during installation due to a rock guard system on the header, please contact the Flexifinger Sales & Support Team for additional instruction.
- CAUTION:** Use extreme caution when utilizing a bolt and/or set screw in the hole at the top of the lifter rail to create a snug fit on the guard. Set screws or bolts should never be used with the black-colored N-series lifters. The lifter must remain free to move and to free-float about ¼"/6mm to ½"/13mm up, down and side-to-side. The use of a set screw in the hole in the top of the lifter rail that is set too tightly may result in damage to the lifter, knife system or equipment.
- CAUTION:** Use extreme caution when traveling over irrigation ruts, sprayer and tractor ruts, large cracks in the ground and other uneven ground conditions. Digging the lifters into the ground can cause severe damage to your equipment as well as your lifters.
- WARNING:** Wear the proper safety equipment (gloves, protective eyewear) when installing and removing the crop lifters from the header. The components may become sharp due to wear from plant material.
- CAUTION:** Ensure there is adequate clearance for the knife system after installing each lifter. Not having proper clearance between the lifter and the knife system may result in equipment damage and/or injury.



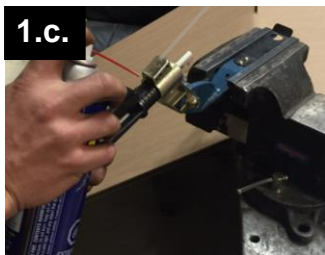
**1. Install the nylon finger into the lifter receptor.**



- a. Place the lifter in a vise with the rail spring pointing towards the ceiling. Tighten the gold-colored receptor – it is only loosely attached at the factory. Do not overtighten because it will require adjustment once all the fingers are in place.



- b. Slide the nylon finger (tail-first) into the receptor. Match up the flat section at the top of the gold-colored receptor with the flat section on the finger's receptor section. See Diagram 1.

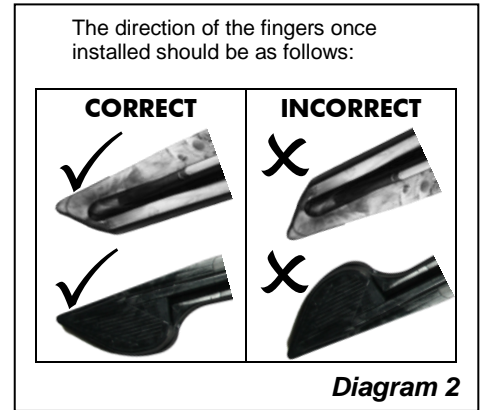


- c. The fit is very snug. If it is difficult to push the finger into the receptor, spray receptor piece of the finger with a multi-purpose lubricant (such as WD-40).

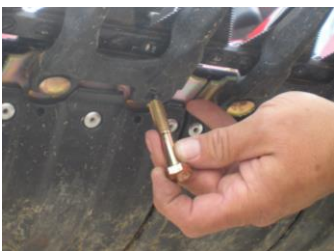


d. Use a rubber mallet or a hammer to tap it into place.

e. Once the finger has bottomed, rotate it 90 degrees with pliers to lock it into place. Ensure that the fingers have been installed with the right side down, as shown in Diagram 2.



## 2. Install the QD™ Nut assembly on the header.



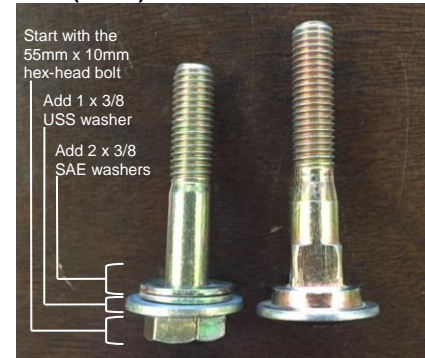
a. Starting 12"/30cm from the right side of the header and every 12"/30cm across the header, remove the guard nut and bolt from the guards. (Please note that the setup for crops seeded in rows requires specialized spacing. Please contact us for setup instructions in this case.)

b. Insert the 10mm x 55mm bolt from the bottom of the header. Install and correctly adjust one QD™ Nut assembly prior to completing the installation on the entire header. This will save you time if you need to adjust the amount of washers.

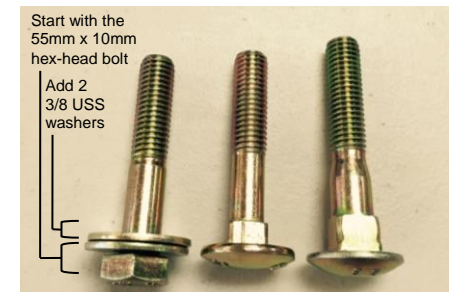
**NOTE:** Optional carriage bolts are available for headers that are designed to use a carriage bolt on the underside of the guard. For headers that accept a 7/16 carriage bolt, which are generally used on MacDon, Case and New Holland headers, use optional carriage bolt part number 32312. For MacDon headers equipped with poly skid plates, such as the MacDon FD70 & FD75, use optional carriage bolt part number 32310. Some other makes of headers will use a 10mm carriage bolt, part number 32314.

For headers that require a carriage bolt, in the event that the carriage bolt (32310, 32312 or 32314) was not purchased, it is possible to mimic the step to accommodate the poly skid plate with the hex-head bolt that is included with the QD™ nut assembly.

### FOR MACDON HEADER WITH POLY SKID PLATE (32310):



### FOR ANY OTHER HEADER REQUIRING A CARRIAGE BOLT (32312 & 32314):

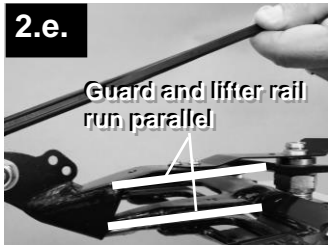


**NOTE:** Using the above configurations, the hex-head bolt may wear over time, in which case it will be difficult to remove without cutting or grinding it off. The hex-head may also catch plant material and rocks under the header.



c. Place washers of the appropriate size and numbers onto the protruding bolt.

- i. For guards longer than 5 3/4"/146mm (for use with black N-Series lifters): For Case IH, MacDon and New Holland headers with guard #86615982, use 4 to 8 (generally 6) USS washers (the larger washer). John Deere guard #H213405 uses 1 - 4 USS washers on top of the cast knife hold-down.
- ii. For guards shorter than 5 3/4"/146mm (for use with blue J-Series lifters): For John Deere guard #H213398 (stubby guard) on HydraFlex™ headers, use 1 - 4 of the USS washers above the knife hold-down. For Schumacher guards, use about 4 SAE washers (the smaller washers) above the header on top of the guard.



- d. Screw on the QD™ nut.
- e. Take one crop lifter and install on the QD™ nut. (See Step 3. for details on installing the lifter on the QD™ nut.) Push up on the lifter so the bottom of the guard touches the bottom of the snout and observe if the rail is relatively parallel to the guard. If not, add or remove washers until it is.
- f. Install the remaining QD™ nuts on the rest of the header using the first-installed QD™ nut as a guide. When necessary to install a QD™ nut assembly on a knife hold down, the number of washers required will need to be reduced by the thickness of the knife hold down.
- g. Torque all QD™ nuts to 60ft-lb / 81Nm.

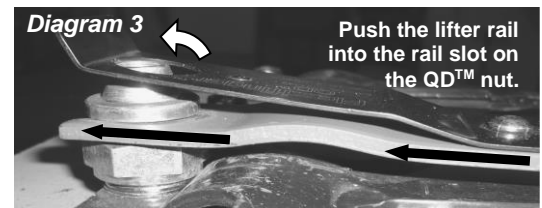
### 3. Attach the lifters to the header.



- a. Slide the lifter snout over the guard with the rail spring side up. Push the lifter rail into the rail slot on the QD™ nut. The rail spring will pop into place under the safety groove. See Diagram 3 and 4.

**NOTE:** To assist in future installation, number the lifters using a paint pen prior to removing them.

**NOTE:** If you have lifters that do not fit into position properly, check each step of the instructions and then try adding or removing a washer or two. If you are still having difficulty, please contact us for further suggestions.



### 4. Adjust the nylon fingers to the desired angle.

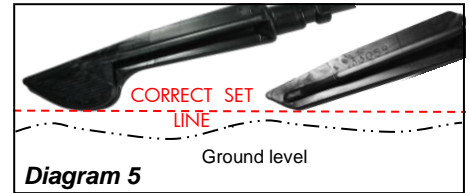


- a. Loosen the receptor's lock nut from the carriage bolt and adjust the angle of the nylon finger.





- b. The finger should be set to a maximum 25 degrees from the ground and set so in the event that the finger touches the ground, the back half of the tip will make contact, as shown in Diagram 5. Generally speaking, less of an angle is usually better for lifting the plant. Ideally, the lifters should be set so that the tip of the nylon finger is about 1/2"/13mm to 3/4"/19mm above the ground.



- c. Set all the lifters to be the same angle; they should form a straight line when you look down the row. It is important that all lifters are working in unison. Retighten the receptor lock nut and carriage bolt on all lifters.

**NOTE:** For best results and whenever possible, adjust the fingers so that they will touch the ground about 5% of the time.

### 5. Ensure there is sufficient space to allow for crop flow.



- a. If there is not adequate space to allow for crop flow, cut the steel tail to the desired length.



**CAUTION:** Leaving too little space between the end of the tail and the may cause damage to the lifters and/or equipment. The crop should flow easily off the lifter into the header's auger or onto the header's draper belt.

### 6. Combine 100'/30m. Re-adjust the angle of the nylon fingers and lifters as required.



- a. Whenever possible prior to installing the crop lifters on the header, combine approximately 100'/30m without the lifters to adjust the header angle, reel speed/height, header height, etc. to achieve optimal settings of the header alone. Once the lifters are installed, drive slowly over the path that has been harvested and observe whether or not the lifters need to be adjusted. Based on the observation, adjust the lifters lower to pick up more plant material or higher to prevent the lifters from contacting the ground so frequently.

### 7. To remove the lifters:

- Lift the QD™ spring high enough to clear the top of the QD™ nut.
- Pull the lifter rail forward to slide the rail out of the slot on the QD™ nut.
- Continue to pull the lifter off until the rail is clear of the QD™ nut.



Flexifinger QD Industries Inc. and/or its subsidiary Flexifinger USA Inc.  
Corporate Head Office: Box 1599, Assiniboia SK Canada S0H 0B0, 306-642-4555

[WWW.FLEXXIFINGER.COM](http://WWW.FLEXXIFINGER.COM)